

# A7846858 | CSFP+ and SFP+ Kit with Optical Attenuators



Compact SFP+ and SFP+-Kit, 10G BASE, Singlemode, up to 20 km, TAA compliant

- Up to 10.3125Gb/s data links
- Duplex LC connector
- Hot-pluggable SFP footprint
- Uncooled DFB laser transmitter
- RoHS compliant and Lead Free
- Up to 20Km on 9/125um SMF
- Metal enclosure for lower EMI
- Single +3.3V power supply
- Compliant with CSFP MSA 2.0 (Option 2)
- Commercial and industrial operating temperature optional
- Trade Agreements Act (TAA) compliant

One CSFP+ and two SFP+ plus two optical attenuators in one package. 10G BASE singlemode with up to 20 km

## Product Classification

Product Type	Optical module
Product Series	CSFP   SFP+

## General Specifications

Interface	LC/UPC
Note	Detailed Product Specifications are available. Please contact your local ANDREW representative.

## Optical Specifications

Fiber Type	9/125 μm, singlemode
Average Optical Output Power, maximum	3 dBm
Average Optical Output Power, minimum	-2 dBm
Operating Wavelength	1270 nm (Rx)   1270 nm (Tx)   1330 nm (Rx)   1330 nm (Tx)
Receiver Sensitivity, maximum	-13 dBm
Receiver Overload	+ 0.5 dBm

## Environmental Specifications

Operating Temperature	0 °C to +70 °C (+32 °F to +158 °F)
-----------------------	------------------------------------

## Packaging and Weights

# A7846858 | CSFP+ and SFP+ Kit with Optical Attenuators

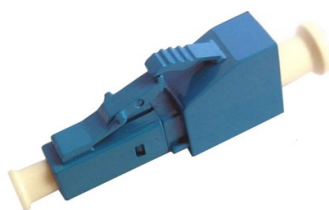
---

Width, packed	120 mm   4.724 in
Depth, packed	250 mm   9.843 in
Packaging quantity	1
Packaging Type	Bag
Weight, gross	0.12 kg   0.265 lb
Weight, net	0.1 kg   0.22 lb

## Included Products

A7843666	–	Fiber Optic Power Reducing Build Out Attenuator, singlemode LC/UPC, 3dB
A7845627 SFP+, 10GBase BiDi 1270nmTx /1330nmRx, up to 20 km	–	Small form factor pluggable+ BiDi Module, 10G BASE, CWDM, Singlemode, TAA compliant, up to 20 km
A7845629 CSFP+, BiDi, TAA	–	Compact SFP+, 10G BASE, Singlemode, up to 20 km, TAA compliant

# A7843666



Fiber Optic Power Reducing Build Out Attenuator, singlemode LC/UPC, 3dB

- Designed to reduce or balance the power in passive optical networks
- Insertable between the connector and the adapter and therefore suited for distribution frames, cabinets and boxes
- High system flexibility because of wave-length independency and polarization insensitivity

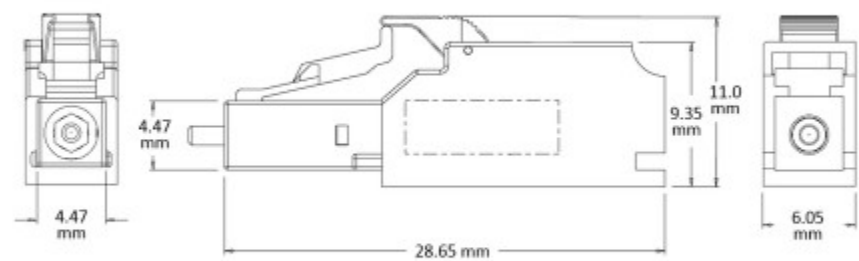
## Product Classification

Regional Availability	North America
Product Type	Fiber attenuator
Product Series	FOA

## General Specifications

Input Connector Interface	LC
Output Connector Interface	LC

## Outline Drawing



## Optical Specifications

Fiber Mode	Singlemode
Attenuation, nominal	3 dB
Operating Wavelength	1430 – 1625 nm

# A7843666

---

<b>Optical Components Standard</b>	GR-910
<b>Optical Power, maximum</b>	250 mW
<b>Return Loss, minimum</b>	40 dB

## Environmental Specifications

<b>Operating Temperature</b>	-40 °C to +75 °C (-40 °F to +167 °F)
<b>Storage Temperature</b>	-40 °C to +80 °C (-40 °F to +176 °F)

# A7845627 | SFP+, 10GBase BiDi 1270nmTx /1330nmRx, up to 20 km



Small form factor pluggable+ BiDi Module, 10G BASE, CWDM, Singlemode, TAA compliant, up to 20 km

- Single LC connector
- Hot-pluggable SFP footprint
- Uncooled DFB laser transmitter
- RoHS compliant and Lead Free
- Up to 20Km on 9/125um SMF
- Metal enclosure for lower EMI
- Commercial and industrial operating temperature optional
- Trade Agreements Act (TAA) compliant

## Product Classification

Product Type	Optical module
Product Series	BiDi SFP

## General Specifications

Interface	LC/UPC
Note	Detailed Product Specifications are available. Please contact your local ANDREW representative.

## Dimensions

Height	12 mm   0.472 in
Width	13.9 mm   0.547 in
Depth	56.5 mm   2.224 in

## Optical Specifications

Fiber Type	9/125 μm, singlemode
Average Optical Output Power, maximum	3 dBm
Average Optical Output Power, minimum	-2 dBm
Rx/Tx Power Accuracy	±3dB / ±3dB
Operating Wavelength	1270 nm (Tx)   1330 nm (Rx)
Receiver Sensitivity, maximum	-13 dBm
Receiver Overload	+ 0.5 dBm

# A7845627 | SFP+, 10GBase BiDi 1270nmTx /1330nmRx, up to 20 km

---

## Environmental Specifications

**Operating Temperature** 0 °C to +70 °C (+32 °F to +158 °F)

## Packaging and Weights

<b>Height, packed</b>	20 mm   0.787 in
<b>Width, packed</b>	105 mm   4.134 in
<b>Depth, packed</b>	65 mm   2.559 in
<b>Packaging quantity</b>	1
<b>Packaging Type</b>	Box
<b>Weight, gross</b>	0.036 kg   0.079 lb
<b>Weight, net</b>	0.022 kg   0.049 lb

# A7845629 | CSFP+, BiDi, TAA



Compact SFP+, 10G BASE, Singlemode, up to 20 km, TAA compliant

- Two Bi-Directional transceivers in one SFP package
- Up to 10.3125Gb/s data links
- Duplex LC connector
- Hot-pluggable SFP footprint
- Uncooled DFB laser transmitter
- RoHS compliant and Lead Free
- Up to 20Km on 9/125um SMF
- Metal enclosure for lower EMI
- Single +3.3V power supply
- Compliant with CSFP MSA 2.0 (Option 2)
- Commercial and industrial operating temperature optional
- Trade Agreements Act (TAA) compliant

Two Bi-Directional transceivers in one SFP package

## Product Classification

Product Type	Optical module
Product Series	CSFP

## General Specifications

Interface	LC/UPC
Note	Detailed Product Specifications are available. Please contact your local ANDREW representative.

## Dimensions

Height	12 mm   0.472 in
Width	13.9 mm   0.547 in
Depth	56.5 mm   2.224 in

## Optical Specifications

Fiber Type	9/125 µm, singlemode
Average Optical Output Power, maximum	3 dBm
Average Optical Output Power, minimum	-2 dBm
Rx/Tx Power Accuracy	±3dB / ±3dB
Operating Wavelength	1270 nm (Rx)   1270 nm (Tx)   1330 nm (Rx)   1330 nm (Tx)
Receiver Sensitivity, maximum	-13 dBm
Receiver Overload	+ 0.5 dBm

# A7845629 | CSFP+, BiDi, TAA

---

## Environmental Specifications

**Operating Temperature** 0 °C to +70 °C (+32 °F to +158 °F)

## Packaging and Weights

<b>Height, packed</b>	20 mm   0.787 in
<b>Width, packed</b>	105 mm   4.134 in
<b>Depth, packed</b>	65 mm   2.559 in
<b>Packaging quantity</b>	1
<b>Packaging Type</b>	Box
<b>Weight, gross</b>	0.036 kg   0.079 lb
<b>Weight, net</b>	0.022 kg   0.049 lb