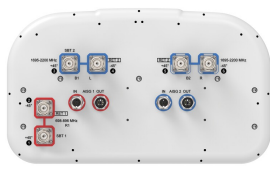


NHH-55B-R2B



6-port sector antenna, 2x 698–896, and 4x 1695–2200 55° HPBW, 2x RETs.

- Superior SPR (Sector Power Ratio) for best-in-class data throughput rates
- Excellent pattern overlay across all bands
- Low band and mid band performance mirrors performance of the equivalent ten port antenna
- Utilizes Pattern Shaping Technology to reduce cell overlap and maximize SINR (Signal to Interference and Noise Ratio)
- Internal SBTs on low and mid band allow remote RET control from the radio over the RF jumper cable
- One LB RET and one MB RET. Both mid band arrays are controlled by one RET to ensure same tilt level for best 4x4 MIMO performance
- Use optional BSAMNT-SBS-2-2 for side-by-side mounting of two hex and/or ten port 55° antennas

General Specifications

| | |
|---------------------------------|----------------------------------------------------------------------------------|
| Antenna Type | Sector |
| Band | Multiband |
| Color | Light Gray (RAL 7035) |
| Grounding Type | RF connector inner conductor and body grounded to reflector and mounting bracket |
| Performance Note | Outdoor usage |
| Radome Material | Fiberglass, UV resistant |
| Radiator Material | Aluminum Low loss circuit board |
| Reflector Material | Aluminum |
| RF Connector Interface | 4.3-10 Female |
| RF Connector Location | Bottom |
| RF Connector Quantity, mid band | 4 |
| RF Connector Quantity, low band | 2 |
| RF Connector Quantity, total | 6 |

Remote Electrical Tilt (RET) Information

| | |
|---------------|--------------------------------------------------------------------------------------------------------------------------------------------------------------------|
| RET Hardware | CommRET v2 |
| RET Interface | 4x 8 pin connector as per IEC 60130-9 Daisy chain in: Male / Daisy chain out: Female Pin3: RS485A(AISG_B), Pin5: RS485B(AISG_A), Pin6: DC 10~30V, Pin7: DC_ Return |

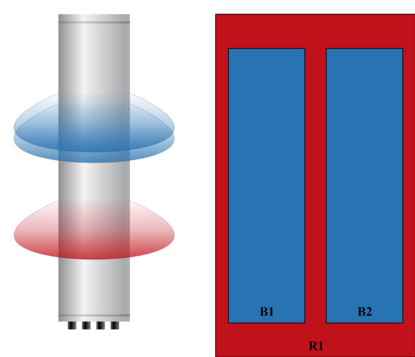
NHH-55B-R2B

| | |
|------------------------------------------|-----------------------------|
| RET Interface, quantity | 2 female 2 male |
| Input Voltage | 10–30 Vdc |
| Internal Bias Tee | Port 1 Port 3 |
| Internal RET | Low band (1) Mid band (1) |
| Power Consumption, active state, maximum | 10 W |
| Power Consumption, idle state, maximum | 2 W |
| Protocol | 3GPP/AISG 2.0 (Single RET) |

Dimensions

| | |
|--------------------------|---------------------|
| Width | 395 mm 15.551 in |
| Depth | 228 mm 8.976 in |
| Length | 1828 mm 71.969 in |
| Net Weight, antenna only | 25.3 kg 55.777 lb |

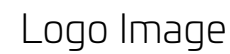
Array Layout



| Array ID | Frequency (MHz) | RF Connector | RET (SRET) | AISG No. | SBT RF PORT | SBT No. | RET UID |
|----------|-----------------|--------------|------------|----------|-------------|---------|-------------------|
| R1 | 698-896 | 1 - 2 | 1 | AISG1 | 1 | 1 | CPxxxxxxxxxxxxxR1 |
| B1 | 1695-2200 | 3 - 4 | 2 | AISG2 | 3 | 2 | CPxxxxxxxxxxxxxB1 |
| B2 | 1695-2200 | 5 - 6 | | | | | |

(Sizes of colored boxes are not true depictions of array sizes)

Port Configuration



Electrical Specifications

NHH-55B-R2B

| | R1 | R1 | B1,B2 | B1,B2 | B1,B2 |
|----------------------------------------------|------------|------------|------------|------------|------------|
| Frequency Band, MHz | 698–806 | 806–896 | 1695–1880 | 1850–1990 | 1920–2200 |
| RF Port | 1,2 | 1,2 | 3,4,5,6 | 3,4,5,6 | 3,4,5,6 |
| Gain, dBi | 15.1 | 15 | 18.1 | 18.4 | 18.5 |
| Beamwidth, Horizontal, degrees | 58 | 54 | 56 | 55 | 52 |
| Beamwidth, Vertical, degrees | 12.6 | 11 | 5.7 | 5.3 | 5 |
| Beam Tilt, degrees | 0–14 | 0–14 | 0–7 | 0–7 | 0–7 |
| USLS (First Lobe), dB | 16 | 16 | 17 | 17 | 16 |
| Front-to-Back Ratio at 180°, dB | 26 | 28 | 32 | 30 | 31 |
| Isolation, Cross Polarization, dB | 25 | 25 | 25 | 25 | 25 |
| Isolation, Inter-band, dB | 25 | 25 | 25 | 25 | 25 |
| VSWR Return loss, dB | 1.5 14.0 | 1.5 14.0 | 1.5 14.0 | 1.5 14.0 | 1.5 14.0 |
| PIM, 3rd Order, typical, 2 x 20 W, dBc | -153 | -153 | -153 | -153 | -153 |
| Input Power per Port at 50°C, maximum, watts | 250 | 250 | 200 | 200 | 200 |

Mechanical Specifications

| | |
|------------------------------------------|-------------------------------------------|
| Effective Projective Area (EPA), frontal | 0.26 m² 2.799 ft² |
| Effective Projective Area (EPA), lateral | 0.23 m² 2.476 ft² |
| Wind Loading @ Velocity, frontal | 272.0 N @ 150 km/h (61.1 lbf @ 150 km/h) |
| Wind Loading @ Velocity, lateral | 244.0 N @ 150 km/h (54.9 lbf @ 150 km/h) |
| Wind Loading @ Velocity, maximum | 547.0 N @ 150 km/h (123.0 lbf @ 150 km/h) |
| Wind Loading @ Velocity, rear | 311.0 N @ 150 km/h (69.9 lbf @ 150 km/h) |
| Wind Speed, maximum | 241 km/h (150 mph) |

Packaging and Weights

| | |
|----------------|---------------------|
| Width, packed | 505 mm 19.882 in |
| Depth, packed | 386 mm 15.197 in |
| Length, packed | 1960 mm 77.165 in |
| Weight, gross | 39 kg 85.98 lb |

Regulatory Compliance/Certifications

NHH-55B-R2B

| Agency | Classification |
|------------|-----------------------------------|
| CHINA-ROHS | Above maximum concentration value |
| ROHS | Compliant/Exempted |
| UK-ROHS | Compliant/Exempted |



Included Products

| | | |
|----------|---|------------------------------------------------------------------------------------------------------------------------------------------------------------------|
| BSAMNT-3 | – | Wide Profile Antenna Downtilt Mounting Kit for 2.4 - 4.5 in (60 - 115 mm) OD round members. Kit contains one scissor top bracket set and one bottom bracket set. |
|----------|---|------------------------------------------------------------------------------------------------------------------------------------------------------------------|

* Footnotes

| | |
|------------------|-----------------------------------------------------------------|
| Performance Note | Severe environmental conditions may degrade optimum performance |
|------------------|-----------------------------------------------------------------|

BSAMNT-3



Wide Profile Antenna Downtilt Mounting Kit for 2.4 - 4.5 in (60 - 115 mm) OD round members. Kit contains one scissor top bracket set and one bottom bracket set.

Product Classification

Product Type Downtilt mounting kit

General Specifications

Application Outdoor

Color Silver

Dimensions

Compatible Diameter, maximum 115 mm | 4.528 in

Compatible Diameter, minimum 60 mm | 2.362 in

Weight, net 6.2 kg | 13.669 lb

Material Specifications

Material Type Galvanized steel

Packaging and Weights

Included Brackets | Hardware

Packaging quantity 1

Weight, gross 6.4 kg | 14.11 lb

Regulatory Compliance/Certifications

| Agency | Classification |
|---------------|--------------------------------------------------------------------------------------------------------------------------|
| CE | Compliant with the relevant CE product directives |
| CHINA-ROHS | Below maximum concentration value |
| ISO 9001:2015 | Designed, manufactured and/or distributed under this quality management system |
| REACH-SVHC | Compliant as per SVHC revision on www.andrew.com/ProductCompliance |
| ROHS | Compliant |
| UK-ROHS | Compliant |

