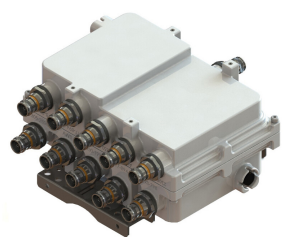


# SPX78192126T-43 | E14F20P03



## Compact Twin Pentaplexer, 700/850/PCS/AWS/WCS-BRS, 4.3-10

- BTS-to-feeder and feeder-to-antenna application
- dc/AISG blocking on all ports
- Compact form factor with reduced size and weight
- New 4.3-10 connectors for improved PIM performance and size reduction
- Available in single (SPX78192126-43) and twin (SPX78192126T-43) configurations

### Product Classification

**Product Type** Pentaplexer

### General Specifications

**Color** Gray

**Common Port Label** Common

**Modularity** 1-Single

**Mounting** Pole | Wall

**Mounting Pipe Hardware** Band clamps (2)

**RF Connector Interface** 4.3-10 Female

**RF Connector Interface Body Style** Medium neck

### Dimensions

**Height** 180 mm | 7.087 in

**Width** 252 mm | 9.921 in

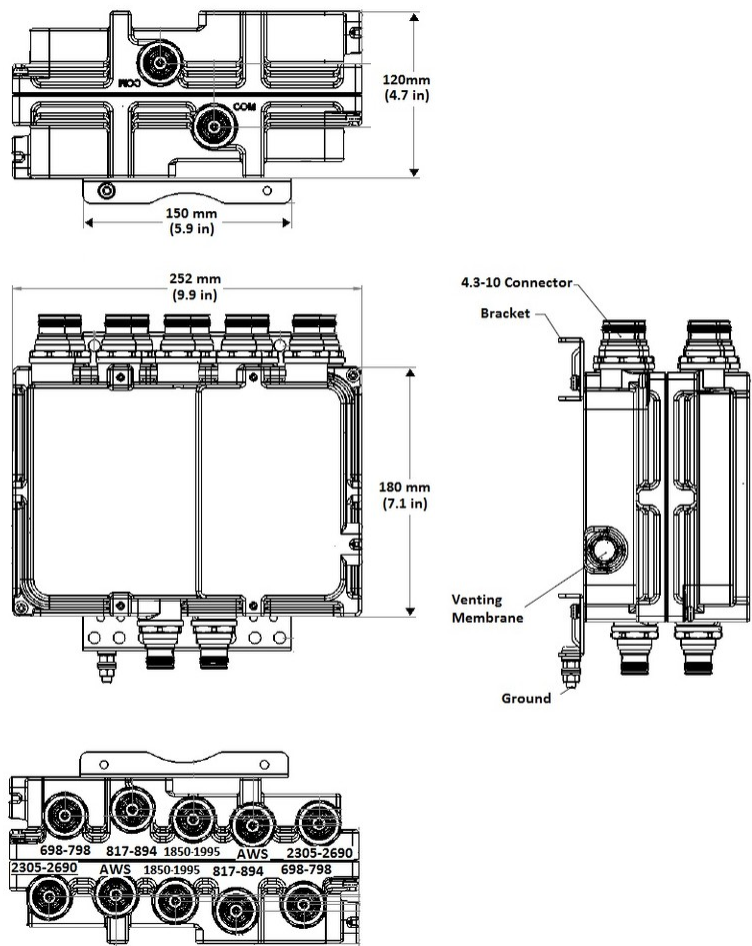
**Depth** 120 mm | 4.724 in

**Ground Screw Diameter** 6 mm | 0.236 in

**Mounting Pipe Diameter Range** 40–160 mm

### Outline Drawing

# SPX78192126T-43 | E14F20P03



## Electrical Specifications

Impedance	50 ohm
License Band, Band Pass	APT 700   AWS 1700   AWS 2000   CEL 850   IMT 2600   LMR 750   LMR 800   PCS 1900   TDD 2600   USA 700   USA 750   WCS 2300

## Electrical Specifications, dc Power/Alarm

dc/AISG Pass-through Method	No dc/AISG pass-through
Lightning Surge Current	5 kA
Lightning Surge Current Waveform	8/20 waveform

## Electrical Specifications

Sub-module	1   2	1   2	1   2	1   2	1   2
------------	-------	-------	-------	-------	-------

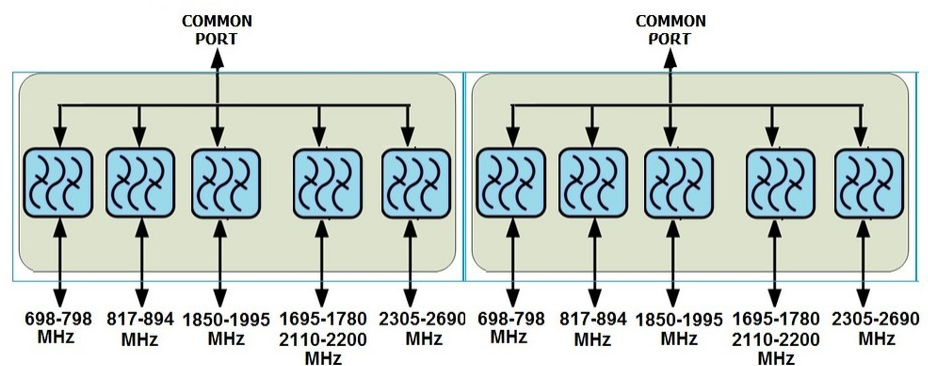
# SPX78192126T-43 | E14F20P03

Branch	1	2	3	4	5
Port Designation	698–798	817–894	AWS	1850–1995	WCS+BRS
License Band	LMR 750, Band Pass USA 700, Band Pass USA 750, Band Pass	CEL 850, Band Pass LMR 800, Band Pass	AWS 1700, Band Pass	PCS 1900, Band Pass	WCS 2300, Band Pass TDD 2600, Band Pass IMT 2600, Band Pass

## Electrical Specifications, Band Pass

Frequency Range, MHz	698–798	817–894	1695–1780 2110–2200	1850–1995	2305–2690
Insertion Loss, typical, dB	0.2	0.3	0.3	0.3	0.2
Total Group Delay, maximum, ns	40	55	25	55	25
Return Loss, minimum, dB	20	20	20	20	20
Return Loss, typical, dB	22	22	22	22	22
Isolation, typical, dB	50	50	50	50	50
Input Power, RMS, maximum, W	100	100	100	100	100
Input Power, PEP, maximum, W	1000	1000	1000	1000	1000
3rd Order PIM, typical, dBc	-161	-161	-161	-161	-161
3rd Order PIM Test Method	2 x 20 W CW tones	2 x 20 W CW tones	1 x 20 W AWS CW tone 1 x 20 W PCS CW tone	2 x 20 W CW tones	2 x 20 W CW tones

## Block Diagram



## Environmental Specifications

Operating Temperature	-40 °C to +65 °C (-40 °F to +149 °F)
Corrosion Test Method	IEC 60068-2-11, 30 days
Ingress Protection Test Method	IEC 60529:2001, IP67

# SPX78192126T-43 | E14F20P03

## Packaging and Weights

Included	Mounting hardware
Mounting Hardware Weight	0.4 kg   0.882 lb
Weight, net	7 kg   15.432 lb

## Regulatory Compliance/Certifications

Agency	Classification
CHINA-ROHS	Below maximum concentration value
REACH-SVHC	Compliant as per SVHC revision on <a href="http://www.andrew.com/ProductCompliance">www.andrew.com/ProductCompliance</a>
ROHS	Compliant
UK-ROHS	Compliant

