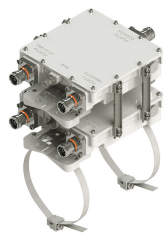


# E14F05P17



Twin Diplexer, DCS 1800/UMTS 2100, AISG compatible, dc pass all ports, with 4.3-10 connectors

- Industry leading PIM performance
- Twin configuration
- New 4.3-10 connectors for improved PIM performance and size reduction
- dc/AISG pass-through on all frequency ports

**OBSOLETE**

Replaced By:

E14F06P38      Twin Diplexer, 1325-1880/1920-2690, dc/AISG pass-through on all ports, with 4.3-10 connectors

## Product Classification

**Product Type**      Diplexer

## General Specifications

**Product Family**      CBC1821

**Color**      Gray

**Common Port Label**      PORT 3 COMMON

**Modularity**      2-Twin

**Mounting**      Pole | Wall

**Mounting Pipe Hardware**      Band clamps (2)

**RF Connector Interface**      4.3-10 Female

**RF Connector Interface Body Style**      Long neck

## Dimensions

**Height**      149 mm | 5.866 in

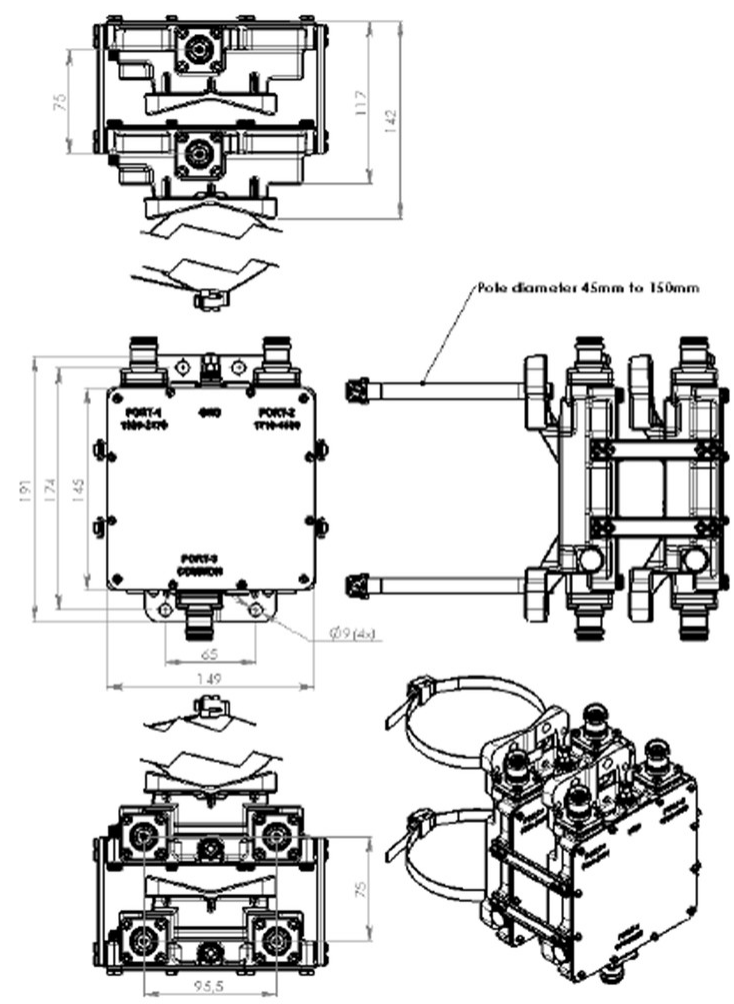
**Width**      145 mm | 5.709 in

**Depth**      117 mm | 4.606 in

**Mounting Pipe Diameter Range**      40–160 mm

# E14F05P17

## Outline Drawing



## Electrical Specifications

<b>Impedance</b>	50 ohm
<b>License Band, Band Pass</b>	DCS 1800   IMT 2100

## Electrical Specifications, dc Power/Alarm

<b>dc/AISG Pass-through, combiner</b>	Branch 1   Branch 2
<b>dc/AISG Pass-through, demultiplexer</b>	Branch 1   Branch 2
<b>Lightning Surge Current</b>	3 kA
<b>Lightning Surge Current Waveform</b>	10/350 waveform

## Electrical Specifications, AISG

# E14F05P17

AISG Pass-through Current, maximum 2 A

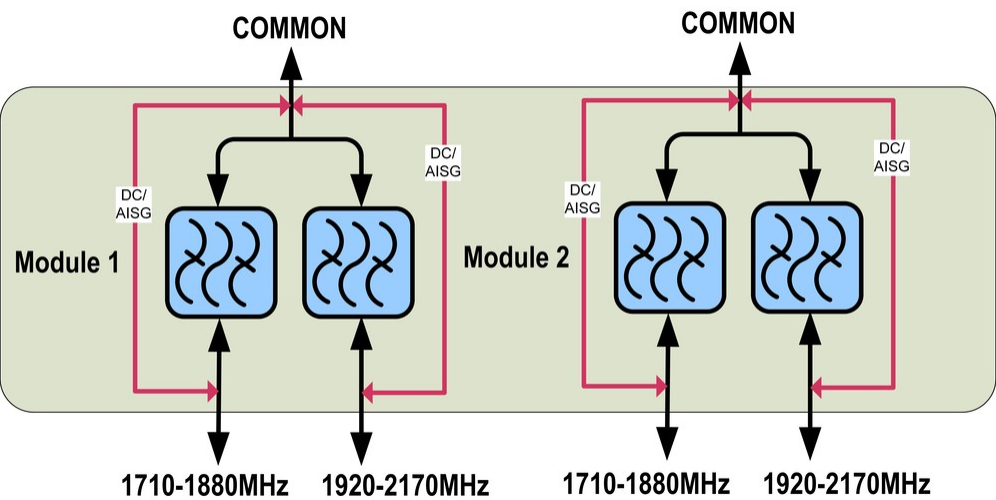
## Electrical Specifications

Sub-module	1   2	1   2
Branch	1	2
Port Designation	PORT 2 1710-1880	PORT 1 1920-2170
License Band	DCS 1800, Band Pass IMT 2100, Band Pass	

## Electrical Specifications, Band Pass

Frequency Range, MHz	1710–1880	1920–2170
Insertion Loss, typical, dB	0.15	0.25
Return Loss, minimum, dB	18	18
Return Loss, typical, dB	20	20
Isolation, minimum, dB	50	50
Input Power, RMS, maximum, W	250	250
Input Power, PEP, maximum, W	2500	2500
3rd Order PIM, typical, dBc	-161	
3rd Order PIM Test Method	Two +43 dBm carriers	
7th Order PIM, typical, dBc		-168
7th Order PIM Test Method		Two +43 dBm carriers

## Block Diagram



# E14F05P17

---

## Environmental Specifications

Operating Temperature	-40 °C to +60 °C (-40 °F to +140 °F)
Corrosion Test Method	IEC 60068-2-11, 30 days
Environmental Test Method	ETSI EN 300 019-1-4
Ingress Protection Test Method	IEC 60529:2001, IP67

## Packaging and Weights

Included	Mounting hardware
Volume	2.5 L
Weight, net	3.5 kg   7.716 lb

## Regulatory Compliance/Certifications

Agency	Classification
ISO 9001:2015	Designed, manufactured and/or distributed under this quality management system