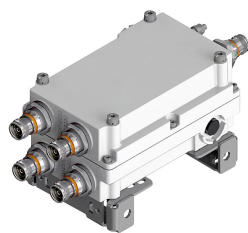


# CBC4W26T-DP-43 | E14F05P21



## Twin Diplexer, 380–2200 MHz/2300–2690 MHz, DC Pass,4.3-10

- New 4.3-10 connectors for improved PIM performance and size reduction
- Extremely wide lower passband (380-2200 MHz) provides flexibility for various combining schemes
- DC/AISG passing on all ports

### Product Classification

**Product Type** Diplexer

### General Specifications

**Product Family** CBC426

**Color** Gray

**Common Port Label** ANT

**Modularity** 2-Twin

**Mounting** Pole | Wall

**Mounting Pipe Hardware** Band clamps (2)

**RF Connector Interface** 4.3-10 Female

**RF Connector Interface Body Style** Long neck

### Dimensions

**Height** 183 mm | 7.205 in

**Width** 121 mm | 4.764 in

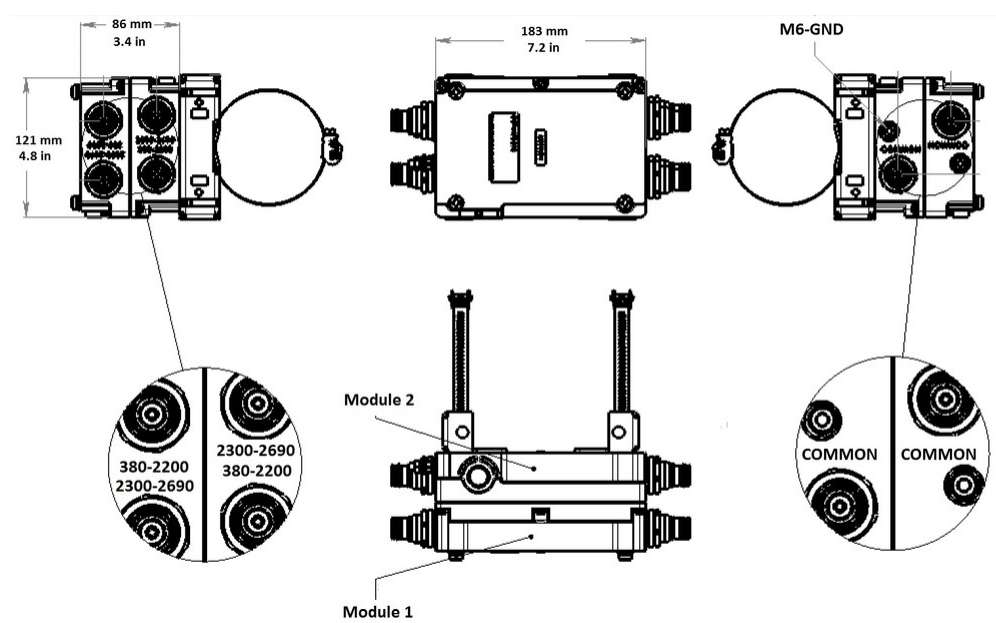
**Depth** 86 mm | 3.386 in

**Ground Screw Diameter** 5 mm | 0.197 in

**Mounting Pipe Diameter Range** 42.6–122 mm

### Outline Drawing

# CBC4W26T-DP-43 | E14F05P21



## Electrical Specifications

Impedance	50 ohm
License Band, Band Pass	APT 700   AWS 1700   CEL 850   CEL 900   DCS 1800   EDD 800   IMT 2100   IMT 2600   LMR 750   LMR 800   LMR 900   PCS 1900   TDD 2300   TDD 2600   USA 700   USA 750   WCS 2300

## Electrical Specifications, dc Power/Alarm

dc/AISG Pass-through Method	Factory set
dc/AISG Pass-through Path	Branch 1   Branch 2

## Electrical Specifications, AISG

AISG Carrier	2176 KHz ± 100 ppm
Insertion Loss, maximum	0.5 dB
Return Loss, minimum	15 dB

## Electrical Specifications

Sub-module	1   2	1   2
Branch	1	2
Port Designation	PORT 1 380-2200	PORT 2 2300-2690

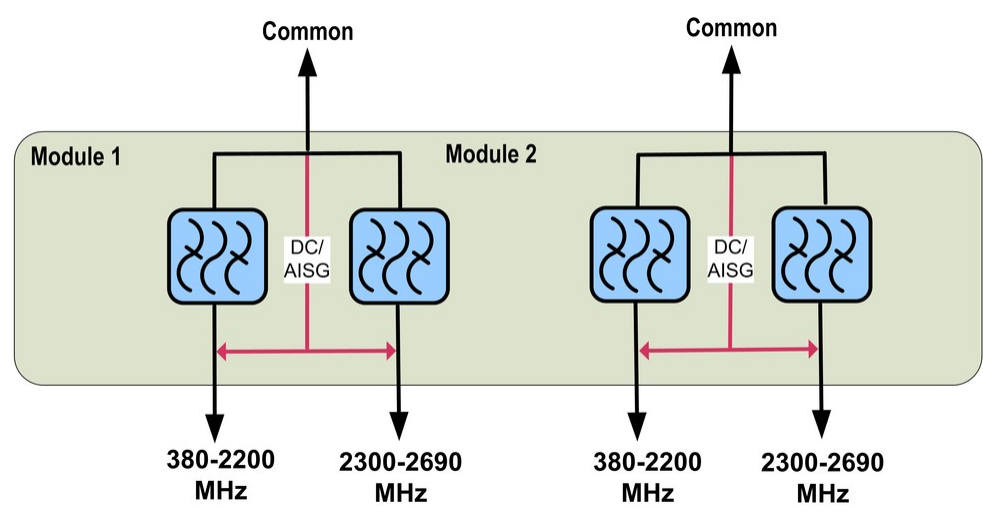
## Electrical Specifications, Band Pass

Frequency Range, MHz	380–2200	2300–2690
----------------------	----------	-----------

# CBC4W26T-DP-43 | E14F05P21

Insertion Loss, typical, dB	0.2	0.2
Total Group Delay, maximum, ns	8	13
Return Loss, typical, dB	22	22
Isolation, minimum, dB	50	50
Input Power, RMS, maximum, W	200	200
Input Power, PEP, maximum, W	2000	2000
3rd Order PIM, typical, dBc	-160	-160
3rd Order PIM Test Method	2 x 20 W CW tones	2 x 20 W CW tones

## Block Diagram



## Mechanical Specifications

Wind Loading @ Velocity, frontal	11.0 N @ 150 km/h (2.5 lbf @ 150 km/h)
Wind Loading @ Velocity, lateral	7.0 N @ 150 km/h (1.6 lbf @ 150 km/h)

## Environmental Specifications

Operating Temperature	-40 °C to +65 °C (-40 °F to +149 °F)
Relative Humidity	5%–100%
Corrosion Test Method	IEC 60068-2-11, 30 days
Ingress Protection Test Method	IEC 60529:2001, IP67

## Packaging and Weights

Included	Mounting hardware
Volume	1.9 L

# CBC4W26T-DP-43 | E14F05P21

---

Weight, net	4.5 kg   9.921 lb
Weight, without mounting hardware	3.9 kg   8.598 lb

## Regulatory Compliance/Certifications

Agency	Classification
ISO 9001:2015	Designed, manufactured and/or distributed under this quality management system