

RRZZVVT4S4-65D-R8



28-port sector antenna, 4x 694–960, 4x 1427–2690 and 4x 1695–2690 MHz 65° HPBW, 8x 2300–2690 and 8x 3300–3800MHz, 90° HPBW, 8x RET

- Includes two planar arrays with separate calibration ports for each array for use in beamforming systems covering all TDD bands
- Optimized for software defined split six sector applications
- Eight internal RETs control the antenna arrays
- 4 M-LOC cluster connectors for the two planar beamforming arrays

This product will be discontinued on: December 31, 2025

General Specifications

Antenna Type	Sector
Band	Multiband
Calibration Connector Interface	M-LOC
Calibration Connector Quantity	2
Color	Light Gray (RAL 7035)
Grounding Type	RF connector inner conductor and body grounded to reflector and mounting bracket
Performance Note	Outdoor usage
Radome Material	Fiberglass, UV resistant
Radiator Material	Low loss circuit board
Reflector Material	Aluminum
RF Connector Interface	4.3-10 Female M-LOC
RF Connector Location	Bottom
RF Connector Quantity, high band	24
RF Connector Quantity, mid band	0
RF Connector Quantity, low band	4
RF Connector Quantity, total	28

Remote Electrical Tilt (RET) Information

RET Hardware	CommRET v2
--------------	------------

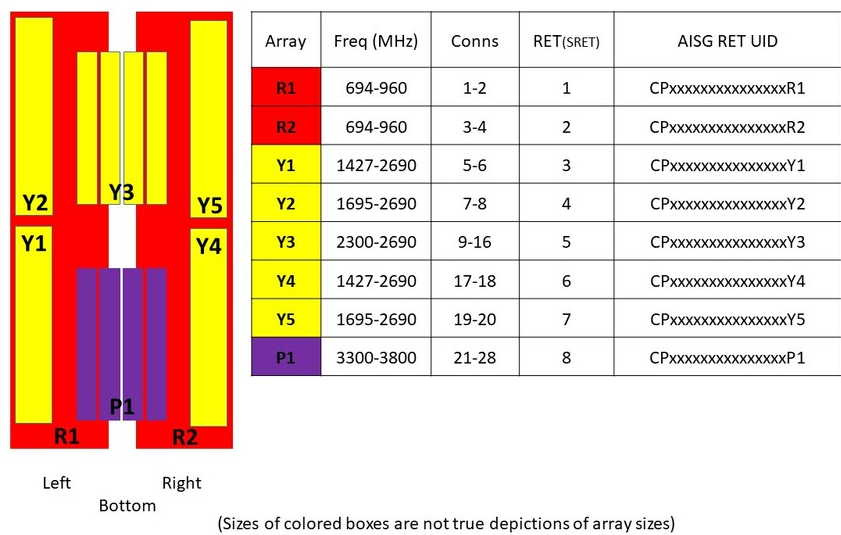
RRZZVVT4S4-65D-R8

RET Interface	8-pin DIN Female 8-pin DIN Male
RET Interface, quantity	2 female 2 male
Input Voltage	10–30 Vdc
Internal RET	High band (6) Low band (2)
Power Consumption, idle state, maximum	1 W
Power Consumption, normal conditions, maximum	8 W
Protocol	3GPP/AISG 2.0 (Single RET)

Dimensions

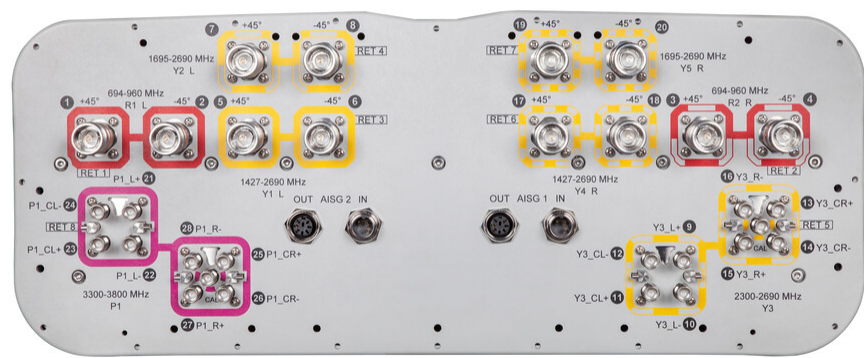
Width	498 mm 19.606 in
Depth	197 mm 7.756 in
Length	2688 mm 105.827 in
Net Weight, antenna only	59.4 kg 130.954 lb

Array Layout



Port Configuration

RRZZVVT4S4-65D-R8



Electrical Specifications

Impedance	50 ohm
Operating Frequency Band	1427 – 2690 MHz 1695 – 2690 MHz 2300 – 2690 MHz 3300 – 3800 MHz 694 – 960 MHz
Polarization	±45°
Total Input Power, maximum	1,900 W @ 50 °C

Electrical Specifications

	R1,R2	R1,R2	R1,R2	Y1,Y2,Y4,Y5Y1,Y2,Y4,Y5Y1,Y4	Y3	P1
Frequency Band, MHz	694–790	790–890	890–960	1695–2180 2300–2690 1427–1518	2300–2690	3300–3800
RF Port	1-4	1-4	1-4	5-8,17-20 5-8,17-20 5,6,17,18	9-16	21-28
Gain, dBi	15.7	16	16.1	16.8 17.8 14.9	16.3	15.9
Beamwidth, Horizontal, degrees	72	66	63	70 60 79	90	89
Beamwidth, Vertical, degrees	8.8	7.8	7.2	7.1 5.5 9.2	4.8	6.5
Beam Tilt, degrees	2–12	2–12	2–12	2–12 2–12 2–12	2–12	2–12
USLS (First Lobe), dB	17	19	23	21 23 25	19	16
Front-to-Back Ratio at 180°, dB	34	30	29	32 31 35	31	29
Coupling level, Amp, Antenna					26	26

RRZZVVT4S4-65D-R8

port to Cal port, dB								
Coupling level, max Amp Δ, Antenna port to Cal port, dB							±2	±2
Coupler, max Amp Δ, Antenna port to Cal port, dB							0.9	0.9
Coupler, max Phase Δ, Antenna port to Cal port, degrees							7	9
Isolation, Cross Polarization, dB	28	28	28	25	25	25	25	25
Isolation, Inter-band, dB	28	28	28	25	25	25	28	28
Isolation, Co-polarization, dB							20	20
VSWR Return loss, dB	1.5 14.0	1.5 14.0	1.5 14.0	1.5 14.0	1.5 14.0	1.5 14.0	1.5 14.0	1.5 14.0
PIM, 3rd Order, 2 x 20 W, dBc	-150	-150	-150	-150	-150	-150	-150	-145
Input Power per Port at 50°C, maximum, watts	300	300	300	250	200	250	150	75

Electrical Specifications, Broadcast 65°

Frequency Band, MHz	2300–2690 3300–3800							
Gain, dBi	17.4 16.4							
Beamwidth, Horizontal, degrees	59 60							
Beamwidth, Vertical, degrees	4.8 6.5							
Front-to-Back Total Power at 180° ± 30°, dB	28 24							
USLS (First Lobe), dB	18 16							

Electrical Specifications, Service Beam

Frequency Band, MHz	2300–2690 3300–3800							
Steered 0° Gain, dBi	21.2 20.3							
Steered 0° Beamwidth, Horizontal, degrees	25 24							
Steered 0° Front-to-Back Total Power at 180° ± 30°, dB	32 28							
Steered 0° Horizontal Sidelobe, dB	13 12							
Steered 30° Gain, dBi	20.4 19.7							
Steered 30° Beamwidth, Horizontal, degrees	29 27							
Steered 30° Front-to-Back	31 27							

RRZZVVT4S4-65D-R8

Total Power at 180° ± 30°, dB

Electrical Specifications, Soft Split

Frequency Band, MHz	2300–2690	3300–3800
Gain, dBi	20.2	19.5
Beamwidth, Horizontal, degrees	32	30
Front-to-Back Total Power at 180° ± 30°, dB	33	29
Horizontal Sidelobe, dB	21	16

Mechanical Specifications

Effective Projective Area (EPA), frontal	1 m² 10.764 ft²
Effective Projective Area (EPA), lateral	0.35 m² 3.767 ft²
Wind Loading @ Velocity, frontal	1,070.0 N @ 150 km/h (240.5 lbf @ 150 km/h)
Wind Loading @ Velocity, lateral	375.0 N @ 150 km/h (84.3 lbf @ 150 km/h)
Wind Loading @ Velocity, maximum	1,385.0 N @ 150 km/h (311.4 lbf @ 150 km/h)
Wind Loading @ Velocity, rear	880.0 N @ 150 km/h (197.8 lbf @ 150 km/h)
Wind Speed, maximum	241 km/h (150 mph)

Packaging and Weights

Width, packed	565 mm 22.244 in
Depth, packed	309 mm 12.165 in
Length, packed	2935 mm 115.551 in
Weight, gross	80.4 kg 177.251 lb

Regulatory Compliance/Certifications

Agency	Classification
CHINA-ROHS	Below maximum concentration value
ISO 9001:2015	Designed, manufactured and/or distributed under this quality management system
REACH-SVHC	Compliant as per SVHC revision on www.andrew.com/ProductCompliance
ROHS	Compliant
UK-ROHS	Compliant



RRZZVVT4S4-65D-R8

Included Products

- | | | |
|-----------|---|--|
| BSAMNT-4 | – | Wide Profile Antenna Downtilt Mounting Kit for 2.4 - 4.5 in (60 - 115 mm) OD round members. Kit contains one scissor top bracket set and one bottom bracket set. |
| BSAMNT-M4 | – | Middle Downtilt Mounting Kit for Long Antennas for 2.4 - 4.5 in (60 - 115 mm) OD round members. Kit contains one scissor bracket set. |

* Footnotes

Performance Note Severe environmental conditions may degrade optimum performance

BSAMNT-4



Wide Profile Antenna Downtilt Mounting Kit for 2.4 - 4.5 in (60 - 115 mm) OD round members. Kit contains one scissor top bracket set and one bottom bracket set.

Product Classification

Product Type Downtilt mounting kit

General Specifications

Application Outdoor

Color Silver

Dimensions

Compatible Diameter, maximum 115 mm | 4.528 in

Compatible Diameter, minimum 60 mm | 2.362 in

Weight, net 6.5 kg | 14.33 lb

Material Specifications

Material Type Galvanized steel

Packaging and Weights

Included Brackets | Hardware

Packaging quantity 1

Regulatory Compliance/Certifications

Agency	Classification
CHINA-ROHS	Below maximum concentration value
ISO 9001:2015	Designed, manufactured and/or distributed under this quality management system
REACH-SVHC	Compliant as per SVHC revision on www.andrew.com/ProductCompliance
ROHS	Compliant
UK-ROHS	Compliant



BSAMNT-M4



Middle Downtilt Mounting Kit for Long Antennas for 2.4 - 4.5 in (60 - 115 mm) OD round members. Kit contains one scissor bracket set.

Product Classification

Product Type Downtilt mounting kit

General Specifications

Application Outdoor

Color Silver

Dimensions

Compatible Diameter, maximum 115 mm | 4.528 in

Compatible Diameter, minimum 60 mm | 2.362 in

Weight, net 4.6 kg | 10.141 lb

Material Specifications

Material Type Galvanized steel

Packaging and Weights

Included Brackets | Hardware

Packaging quantity 1

Regulatory Compliance/Certifications

Agency	Classification
CHINA-ROHS	Below maximum concentration value
ISO 9001:2015	Designed, manufactured and/or distributed under this quality management system
REACH-SVHC	Compliant as per SVHC revision on www.andrew.com/ProductCompliance
ROHS	Compliant
UK-ROHS	Compliant

