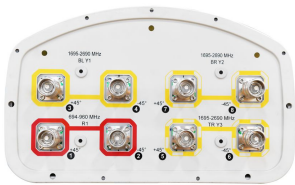


# RV365D-M-V2



8-port sector antenna, 2x 694–960 and 6x 1695–2690 MHz, 65° HPBW, RET compatible.

- Includes manually adjustable electrical tilt
- Can be upgraded to RET capable by installing up to 4 x ACCURET-A20 RET Actuators (rear mounted) - purchase separately

### OBSOLETE

This product was discontinued on: November 30, 2023

Replaced By:

RV3-65D-R4-V3      8-port sector antenna, 2x 694–960 and 6x 1695–2690 MHz, 65° HPBW, 4x IntRET. Antenna rear wind loading 506N @ 150km/h

## General Specifications

Antenna Type	Sector
Band	Multiband
Grounding Type	RF connector inner conductor and body grounded to reflector and mounting bracket
Performance Note	Outdoor usage   Wind loading figures are validated by wind tunnel measurements described in white paper WP-112534-EN
Radome Material	Fiberglass, UV resistant
Radiator Material	Low loss circuit board
Reflector Material	Aluminum
RF Connector Interface	4.3-10 Female
RF Connector Location	Bottom
RF Connector Quantity, high band	6
RF Connector Quantity, mid band	0
RF Connector Quantity, low band	2
RF Connector Quantity, total	8

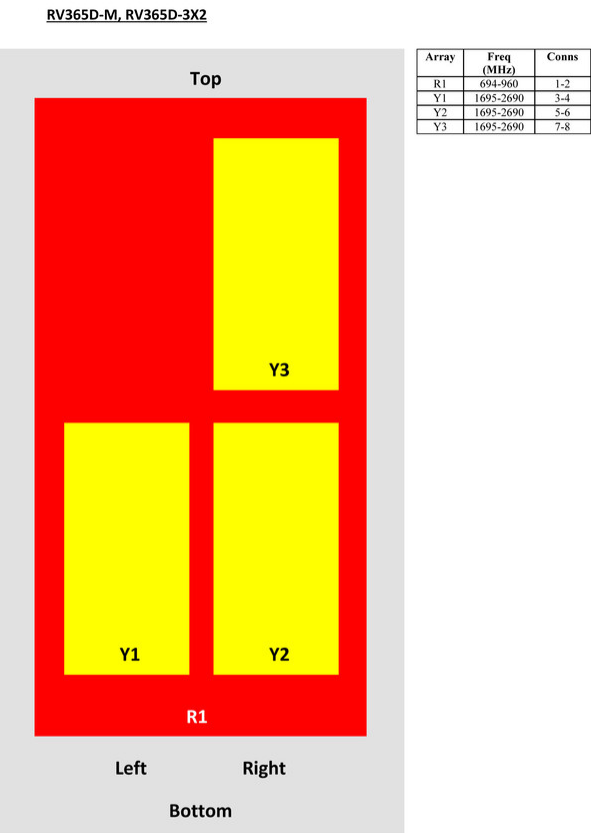
## Dimensions

Width	301 mm   11.85 in
Depth	180 mm   7.087 in

# RV365D-M-V2

Length	2645 mm   104.134 in
Net Weight, without mounting kit	31.5 kg   69.446 lb

## Array Layout



View from the front of the antenna  
(Sizes of colored boxes are not true depictions of array sizes)

## Electrical Specifications

Impedance	50 ohm
Operating Frequency Band	1695 – 2690 MHz   694 – 960 MHz
Polarization	±45°
Total Input Power, maximum	1,000 W @ 50 °C

## Electrical Specifications

Frequency Band, MHz	694–790	790–890	890–960	1695–1920	1920–2200	2300–2500	2500–2690
---------------------	---------	---------	---------	-----------	-----------	-----------	-----------

# RV365D-M-V2

Gain, dBi	16.5	16.8	16.7	17	17.9	18.1	18.1
Beamwidth, Horizontal, degrees	70	69	66	61	60	62	60
Beamwidth, Vertical, degrees	8.1	7.4	6.8	7.5	6.6	5.7	5.4
Beam Tilt, degrees	0-10	0-10	0-10	2-12	2-12	2-12	2-12
USLS (First Lobe), dB	15	20	16	19	15	16	15
Front-to-Back Ratio at 180°, dB	28	34	33	30	31	34	33
Isolation, Cross Polarization, dB	28	28	28	25	25	25	25
Isolation, Inter-band, dB	30	30	30	30	30	30	30
VSWR   Return loss, dB	1.5   14.0	1.5   14.0	1.5   14.0	1.5   14.0	1.5   14.0	1.5   14.0	1.5   14.0
PIM, 3rd Order, 2 x 20 W, dBc	-153	-153	-153	-153	-153	-153	-153
Input Power per Port at 50°C, maximum, watts	300	300	300	250	250	200	200

## Mechanical Specifications

Wind Loading @ Velocity, frontal	433.0 N @ 150 km/h (97.3 lbf @ 150 km/h)
Wind Loading @ Velocity, lateral	367.0 N @ 150 km/h (82.5 lbf @ 150 km/h)
Wind Loading @ Velocity, maximum	834.0 N @ 150 km/h (187.5 lbf @ 150 km/h)
Wind Loading @ Velocity, rear	439.0 N @ 150 km/h (98.7 lbf @ 150 km/h)
Wind Speed, maximum	241 km/h (150 mph)

## Packaging and Weights

Width, packed	409 mm   16.102 in
Depth, packed	309 mm   12.165 in
Length, packed	2894 mm   113.937 in
Weight, gross	51.1 kg   112.656 lb

## Regulatory Compliance/Certifications

Agency	Classification
CHINA-ROHS	Below maximum concentration value
ISO 9001:2015	Designed, manufactured and/or distributed under this quality management system
REACH-SVHC	Compliant as per SVHC revision on <a href="http://www.andrew.com/ProductCompliance">www.andrew.com/ProductCompliance</a>
ROHS	Compliant
UK-ROHS	Compliant

# RV365D-M-V2

---



## Included Products

BSAMNT-3	–	Wide Profile Antenna Downtilt Mounting Kit for 2.4 - 4.5 in (60 - 115 mm) OD round members. Kit contains one scissor top bracket set and one bottom bracket set.
BSAMNT-M	–	Middle Downtilt Mounting Kit for Long Antennas for 2.4 - 4.5 in (60 - 115 mm) OD round members. Kit contains one scissor bracket set.

## \* Footnotes

<b>Performance Note</b>	Severe environmental conditions may degrade optimum performance
-------------------------	---