

# LNx-6515DS-VTM



2-port sector antenna, 2x 698–896 MHz, 65° HPBW, RET compatible

- Excellent choice to maximize both coverage and capacity in suburban and rural applications
- Fully compatible with Andrew remote electrical tilt system for greater OpEx savings
- Exceptional horizontal pattern roll-off and strong front-to-back ratio
- Extended bandwidth allows one antenna to serve multiple frequency allocations
- Great solution to maximize network coverage and capacity
- The RF connectors are designed for IP67 rating and the radome for IP56 rating

**OBSOLETE**

This product was discontinued on: March 31, 2021

Replaced By:

LNx-6515DS-A1M      2-port sector antenna, 2x 698–896 MHz, 65° HPBW, 1x RET

## General Specifications

|                                  |  |
|----------------------------------|--|
| Antenna Type                     | Sector   |
| Band                             | Single band  |
| Color                            | Light Gray (RAL 7035)  |
| Grounding Type                   | RF connector inner conductor and body grounded to reflector and mounting bracket                                     |
| Performance Note                 | Outdoor usage   Wind loading figures are validated by wind tunnel measurements described in white paper WP-112534-EN |
| Radome Material                  | Fiberglass, UV resistant   |
| Radiator Material                | Aluminum   |
| RF Connector Interface           | 7-16 DIN Female  |
| RF Connector Location            | Bottom   |
| RF Connector Quantity, high band | 0  |
| RF Connector Quantity, mid band  | 0  |
| RF Connector Quantity, low band  | 2  |
| RF Connector Quantity, total     | 2  |

## Remote Electrical Tilt (RET) Information

|  |                |
|--|----------------|
| Model with Factory Installed AISG 2.0 Actuator | LNx-6515DS-A1M |
|--|----------------|

# LNx-6515DS-VTM

## Dimensions

|                                  |                     |
|----------------------------------|---------------------|
| Width                            | 301 mm   11.85 in   |
| Depth                            | 180.5 mm   7.106 in |
| Length                           | 2453 mm   96.575 in |
| Net Weight, without mounting kit | 19.8 kg   43.651 lb |

## Array Layout



| Array | Freq (MHz) | Conns |
|-------|------------|-------|
| R1    | 698-896    | 1-2   |

Bottom

(Sizes of colored boxes are not true depictions of array sizes)

## Electrical Specifications

|                          |               |
|--------------------------|---------------|
| Impedance                | 50 ohm        |
| Operating Frequency Band | 698 – 896 MHz |
| Polarization             | ±45°          |

## Electrical Specifications

| Frequency Band, MHz             | 698–806 | 806–896 |
|---------------------------------|---------|---------|
| Gain, dBi                       | 16.7    | 17.6    |
| Beamwidth, Horizontal, degrees  | 65      | 63.8    |
| Beamwidth, Vertical, degrees    | 9.7     | 8.6     |
| Beam Tilt, degrees              | 0–8     | 0–8     |
| USLS (First Lobe), dB           | 17      | 17      |
| Front-to-Back Ratio at 180°, dB | 32      | 27      |
| CPR at Boresight, dB            | 24      | 27      |

# LNx-6515DS-VTM

|                                      |            |            |
|--------------------------------------|------------|------------|
| CPR at Sector, dB                    | 15         | 13         |
| Isolation, Cross Polarization, dB    | 30         | 30         |
| VSWR   Return loss, dB               | 1.4   15.6 | 1.4   15.6 |
| PIM, 3rd Order, 2 x 20 W, dBc        | -153       | -153       |
| Input Power per Port, maximum, watts | 400        | 400        |

## Mechanical Specifications

|                                  |   |
|----------------------------------|---|
| Wind Loading @ Velocity, frontal | 396.0 N @ 150 km/h (89.0 lbf @ 150 km/h)  |
| Wind Loading @ Velocity, lateral | 333.0 N @ 150 km/h (74.9 lbf @ 150 km/h)  |
| Wind Loading @ Velocity, maximum | 762.0 N @ 150 km/h (171.3 lbf @ 150 km/h) |
| Wind Loading @ Velocity, rear    | 401.0 N @ 150 km/h (90.1 lbf @ 150 km/h)  |
| Wind Speed, maximum              | 241 km/h (150 mph)                        |

## Packaging and Weights

|                |                      |
|----------------|----------------------|
| Width, packed  | 392 mm   15.433 in   |
| Depth, packed  | 295 mm   11.614 in   |
| Length, packed | 2718 mm   107.008 in |
| Weight, gross  | 36.9 kg   81.35 lb   |

## Regulatory Compliance/Certifications

| Agency        | Classification   |
|---------------|--|
| CE            | Compliant with the relevant CE product directives  |
| CHINA-ROHS    | Below maximum concentration value  |
| ISO 9001:2015 | Designed, manufactured and/or distributed under this quality management system   |
| REACH-SVHC    | Compliant as per SVHC revision on <a href="http://www.andrew.com/ProductCompliance">www.andrew.com/ProductCompliance</a> |
| ROHS          | Compliant  |
| UK-ROHS       | Compliant  |



## Included Products

|          |  |
|----------|--|
| BSAMNT-3 | – Wide Profile Antenna Downtilt Mounting Kit for 2.4 - 4.5 in (60 - 115 mm) OD round members. Kit contains one scissor top bracket set and one bottom bracket set. |
| BSAMNT-M | – Middle Downtilt Mounting Kit for Long Antennas for 2.4 - 4.5 in (60 - 115 mm) OD round members. Kit contains one scissor bracket set.                            |

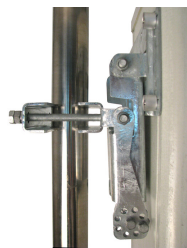
# LNx-6515DS-VTM

---

\* Footnotes

**Performance Note**      Severe environmental conditions may degrade optimum performance

# BSAMNT-3



Wide Profile Antenna Downtilt Mounting Kit for 2.4 - 4.5 in (60 - 115 mm) OD round members. Kit contains one scissor top bracket set and one bottom bracket set.

## Product Classification

**Product Type** Downtilt mounting kit

## General Specifications

**Application** Outdoor

**Color** Silver

## Dimensions

**Compatible Diameter, maximum** 115 mm | 4.528 in

**Compatible Diameter, minimum** 60 mm | 2.362 in

**Weight, net** 6.2 kg | 13.669 lb

## Material Specifications

**Material Type** Galvanized steel

## Packaging and Weights

**Included** Brackets | Hardware

**Packaging quantity** 1

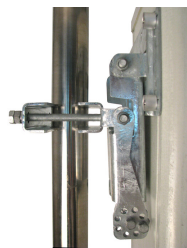
**Weight, gross** 6.4 kg | 14.11 lb

## Regulatory Compliance/Certifications

| Agency        | Classification   |
|---------------|--|
| CE            | Compliant with the relevant CE product directives  |
| CHINA-ROHS    | Below maximum concentration value  |
| ISO 9001:2015 | Designed, manufactured and/or distributed under this quality management system   |
| REACH-SVHC    | Compliant as per SVHC revision on <a href="http://www.andrew.com/ProductCompliance">www.andrew.com/ProductCompliance</a> |
| ROHS          | Compliant  |
| UK-ROHS       | Compliant  |



# BSAMNT-M



Middle Downtilt Mounting Kit for Long Antennas for 2.4 - 4.5 in (60 - 115 mm) OD round members. Kit contains one scissor bracket set.

## Product Classification

**Product Type** Downtilt mounting kit

## General Specifications

**Application** Outdoor

**Color** Silver

## Dimensions

**Compatible Diameter, maximum** 115 mm | 4.528 in

**Compatible Diameter, minimum** 60 mm | 2.362 in

**Weight, net** 4.5 kg | 9.921 lb

## Material Specifications

**Material Type** Galvanized steel

## Packaging and Weights

**Included** Brackets | Hardware

**Packaging quantity** 1

## Regulatory Compliance/Certifications

| Agency        | Classification   |
|---------------|--|
| CHINA-ROHS    | Below maximum concentration value  |
| ISO 9001:2015 | Designed, manufactured and/or distributed under this quality management system   |
| REACH-SVHC    | Compliant as per SVHC revision on <a href="http://www.andrew.com/ProductCompliance">www.andrew.com/ProductCompliance</a> |
| ROHS          | Compliant  |
| UK-ROHS       | Compliant  |

