

- 1.0 GENERAL NOTES  
1.1 ALL METRIC DIMENSIONS ARE IN BRACKETS [X. X]  
1.2 FOR PATENT INFO: <https://www.adwpat.com>  
2.0 DESIGN NOTES

2.1 ANY HAZARDS OR OBSTRUCTIONS TO THE CLIMBING FACILITY AND SAFETY CLIMB MUST BE IDENTIFIED PRIOR TO INSTALLING THE APPURTENANCE. ADDITIONAL PRODUCTS MAY BE REQUIRED TO MAINTAIN THE INTEGRITY OF THE SAFETY CLIMB. DURING INSTALLATION, TEMPORARY AND/OR PERMANENT PRECAUTIONARY MEASURES SHOULD BE TAKEN TO PRESERVE THE CLIMBING FACILITY AND/OR SAFETY CLIMB.

3.0 MANUFACTURING/SPECIAL REQUIREMENTS

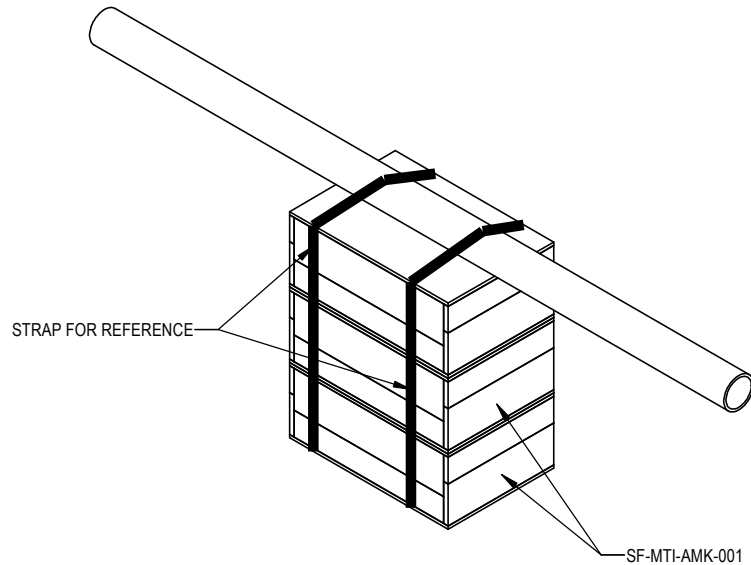
- 3.1 TIGHTEN ALL BOLTS 3/8" OR LARGER SECURING FLAT PLATES SNUG TIGHT.  
3.2 SNUG TIGHT IS DEFINED AS THE CONDITION OBTAINED WITH A FEW IMPACTS OF AN IMPACT WRENCH OR THE FULL EFFORT OF AN INSTALLER USING AN ORDINARY SPUD WRENCH TO BRING THE CONNECTED LAYERS (PLIES) OF STEEL INTO FULL CONTACT.  
3.3 FOR BOLTS IN A PATTERN, TIGHTEN IN A CRISS-CROSS OR STAR SEQUENCE, INCREASING TORQUE IN GRADUAL STEPS UNTIL SNUG TIGHT.

4.0 TEST

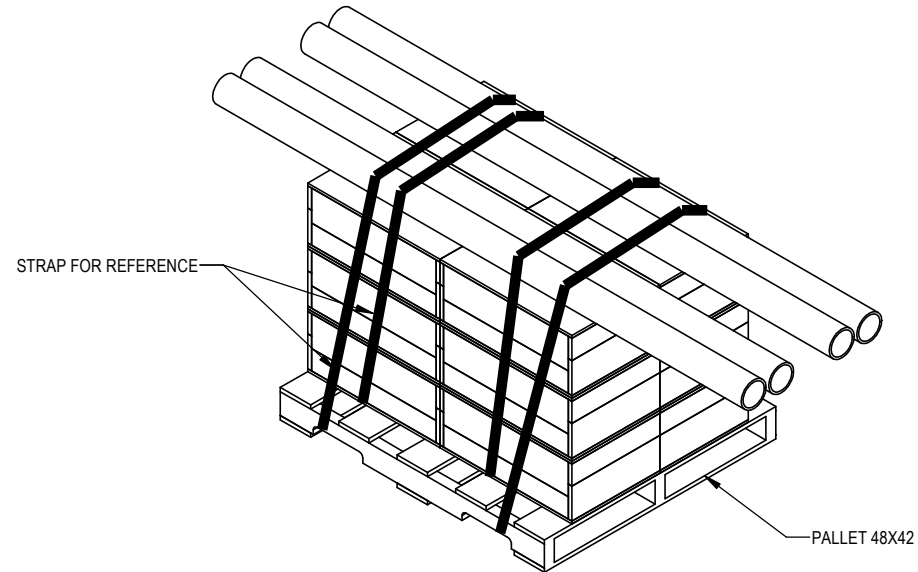
5.0 PACKAGING

- 5.1 PACKAGING SHALL MEET ANDREW REQUIREMENTS PER DOCUMENT IS-PL-3005  
5.2 PRINTED DOCUMENT TO BE PLACED INSIDE POLYBAG AND THEN IN SHIPPING CONTAINER  
5.3 EXTRA HARDWARE MAY BE SUPPLIED, BAGGED AND SHIPPED


REVISIONS			
REV.	DESCRIPTION	DATE	APPROVED
A	INITIAL RELEASE	LL1090 21NOV25	YC1015 50105751AMO



SINGLE PACKAGE



BULK PACKAGE

		<b>ANDREW®</b> an Amphenol company	
TOLERANCES		SAP MATERIAL MASTER	
1 PLACE X[X] ± 0.2[6.3]	3 PLACE XXX[X] ± 0.060[1.5]	<b>SF-MTI-AMK-005</b>	
2 PLACE XX[X] ± 0.12[3.0]	ANGLES ± 2°		
FINISH		MATERIAL	
NAME		DATE	TITLE
CE	LL1090	21NOV25	MTI STRESS RELIEF - NON SPINE
RW			
AD			
RE			
ECN 50105751AMO		SCALE	DOCUMENT NO.
		<b>1:12</b>	<b>SF-MTI-AMK-005</b>
SIZE		Auth Group	INSL
VERSION		STATUS	REVISION
00		IW	A
SHEET		1 OF 3	

Confidential

D

C

B

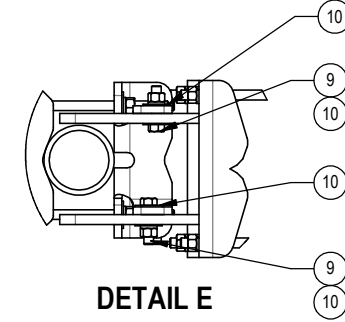
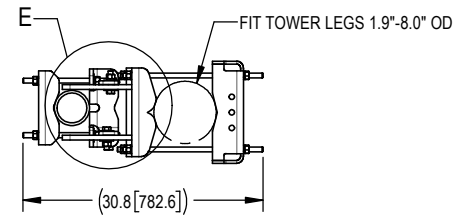
A

4

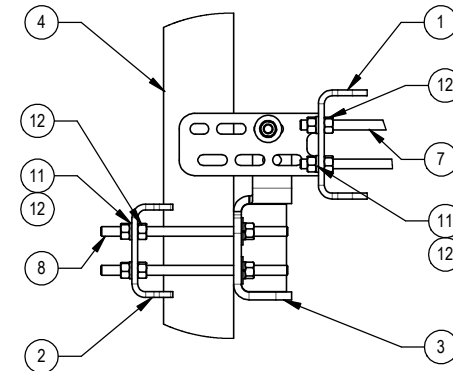
3

2

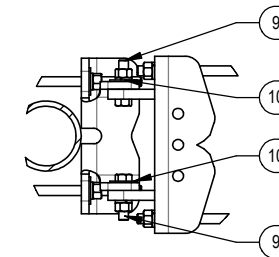
1



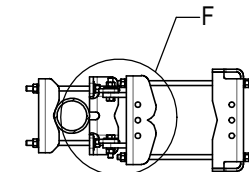
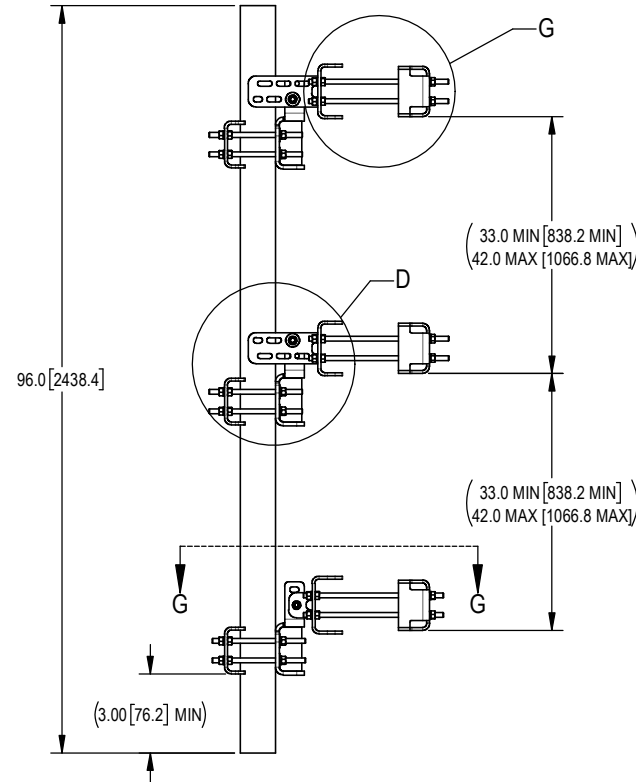
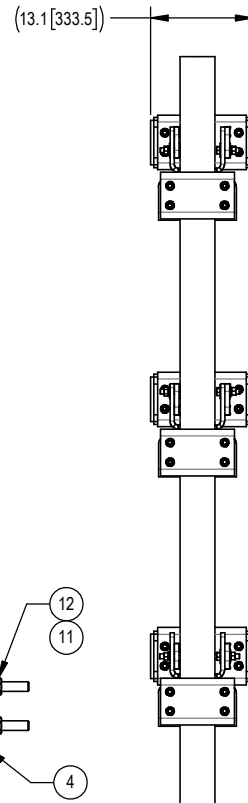
**DETAIL E**  
SCALE 1 : 6



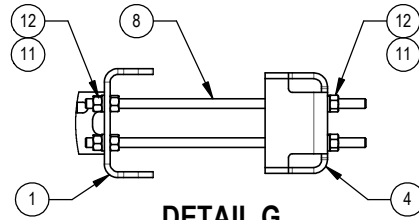
**DETAIL D**  
SCALE 1 : 6



**DETAIL F**  
SCALE 1 : 6



**SECTION G-G**  
SCALE 1 : 12



**DETAIL G**  
SCALE 1 : 6

COMPONENT PART NUMBERS PROVIDED FOR ASSEMBLY PURPOSES;  
INDIVIDUAL COMPONENTS MAY BE SHIPPED AS PARTS WITHIN AN INCLUDED KIT.

ITEM	PART NO.	DESCRIPTION	QTY.	WEIGHT	NOTE NO.
1	MTC4212-1000-00	WELDMENT, TOP TAPER BRACKET	2	22.58 LBS	
2	MTC4212-2000-00	SPINE FRONT BRACKET	3	9.26 LBS	
3	MTC4212-3000-00	SPINE BACK BRACKET	3	21.09 LBS	
4	BPS-CCJ-G-096-H	PIPE-GALV, 4.5\"OD X 96\"	1	120.30 LBS	
5	SFG2381	WELDMENT, HD, LOWER TOWER LEG BRACKET	1	17.42 LBS	
6	SFG2289	G2 RRU BACK CLAMP, HD	3	18.65 LBS	
7	MT-382-18	5/8\" X 18\" GALV THREADED ROD	12	1.55 LBS	
8	MT-381	5/8\" X 12\" GALV THREADED ROD	12	1.04 LBS	
9	GB-05245	5/8\" X 2-1/2\" GALV BOLT KIT	6	0.30 LBS	
10	GW-F-05	5/8\" GALV FLAT WASHER, 1.7OD	22	0.06 LBS	
11	GWL-05	5/8\" GALV LOCK WASHER	48	0.03 LBS	
12	GN-05	5/8\" GALV HEX NUT	72	0.08 LBS	


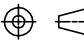
4

3

2

1

Confidential

 <b>ANDREW</b> <sup>®</sup> an Amphenol company				
TITLE				
MTI STRESS RELIEF - NON SPINE				
SIZE	SCALE	DOCUMENT NO.		
<b>C</b>	<b>1:24</b>	SF-MTI-AMK-005		
		DRAWING		
		VERSION	STATUS	REVISION
		00	IN	A
				SHEET
				2 OF 3

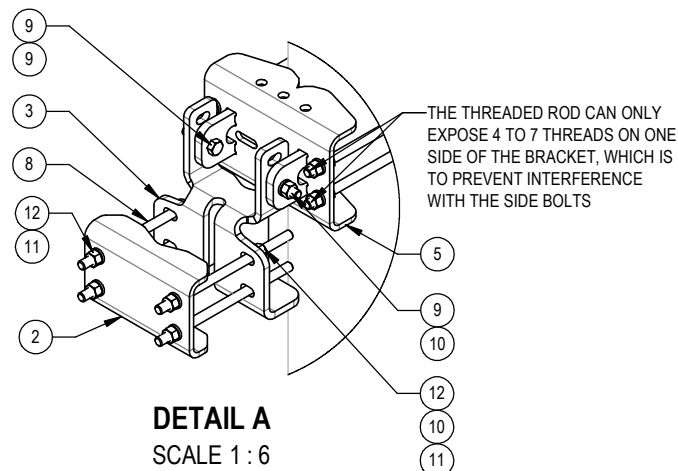
D

C

B

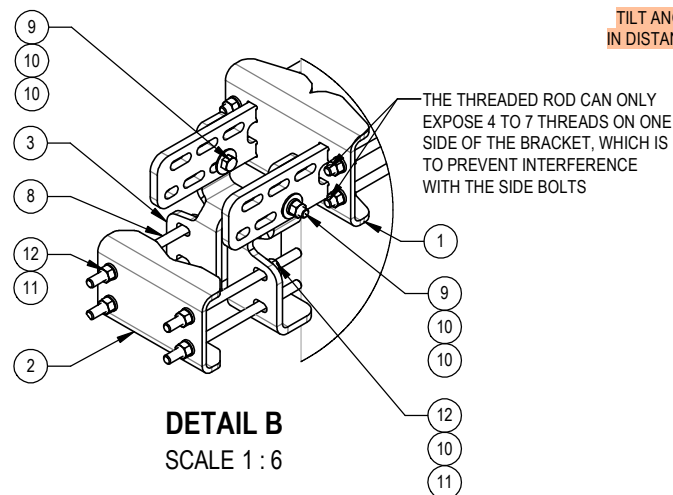
A

ITEM 4 IS OMITTED FOR CLARITY OF INSTALLATION STEPS IN DETAIL A, B AND C.  
BEFORE STARTING INSTALLATION STEP 1, INSTALL THREE SETS OF CLAMP BRACKETS (1 SET OF ITEM 6 & ITEM 5, 2 SETS OF ITEM 6 & ITEM 1) TO THE TOWER LEG.



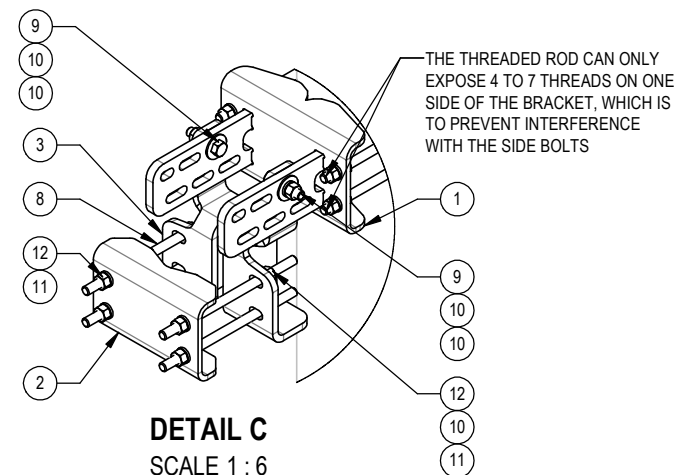
**DETAIL A**  
SCALE 1:6

**STEP 1: FIX THE LOWER PIVOT POSITION**



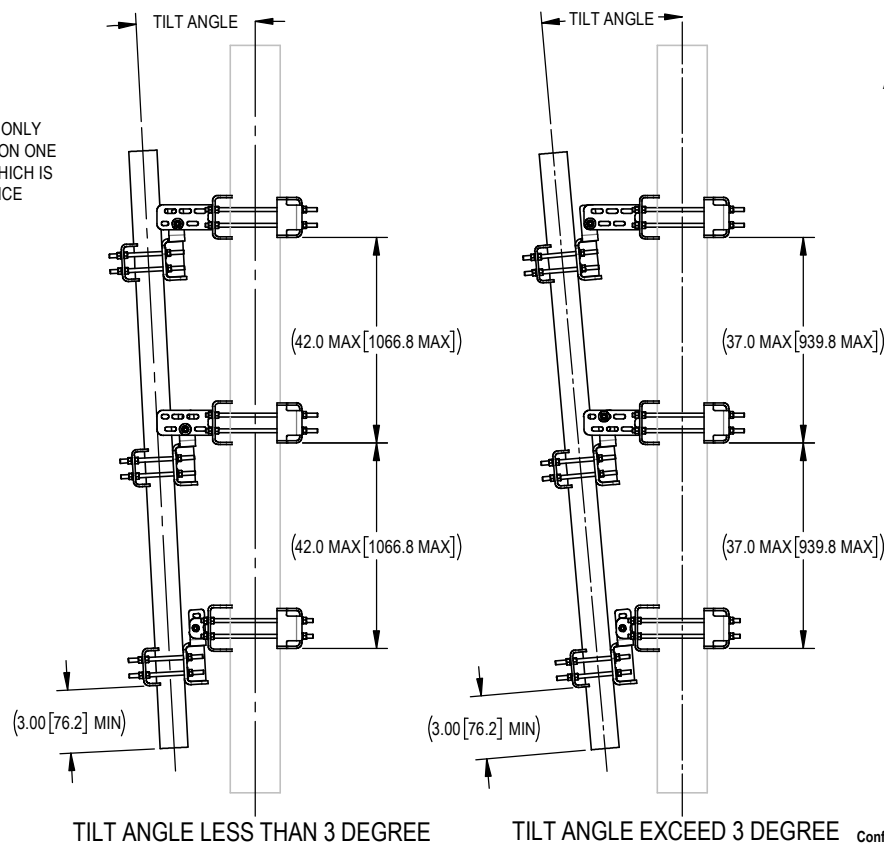
**DETAIL B**  
SCALE 1:6

**STEP 2: SET TAPER BY ALIGNING APPROPRIATE HOLE POSITIONS AT THE TOP CLAMP**

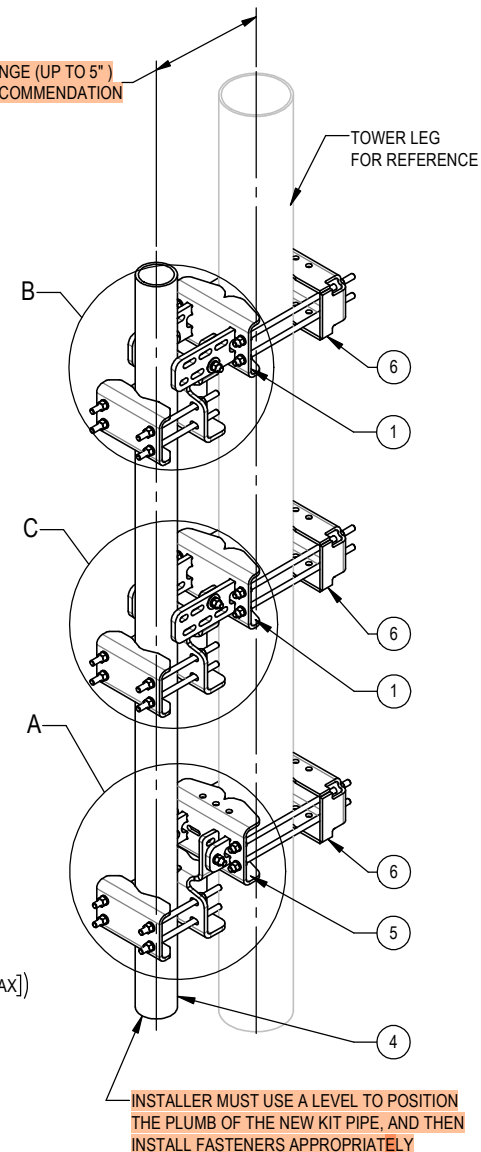




**DETAIL C**  
SCALE 1:6

**STEP 3: LOCATE THE APPROPRIATE ALIGNMENT HOLES FOR THE CENTER CLAMP**



TILT ANGLE RANGE (UP TO 5°)  
IN DISTANCE RECOMMENDATION



 <b>ANDREW</b> an Amphenol company			
TITLE MTI STRESS RELIEF - NON SPINE			
SIZE <b>C</b>	SCALE <b>1:24</b>	DOCUMENT NO. SF-MTI-AMK-005	
		DRAWING	
		VERSION 00	STATUS IN
		REVISION A	SHEET 3 OF 3

Confidential