

4

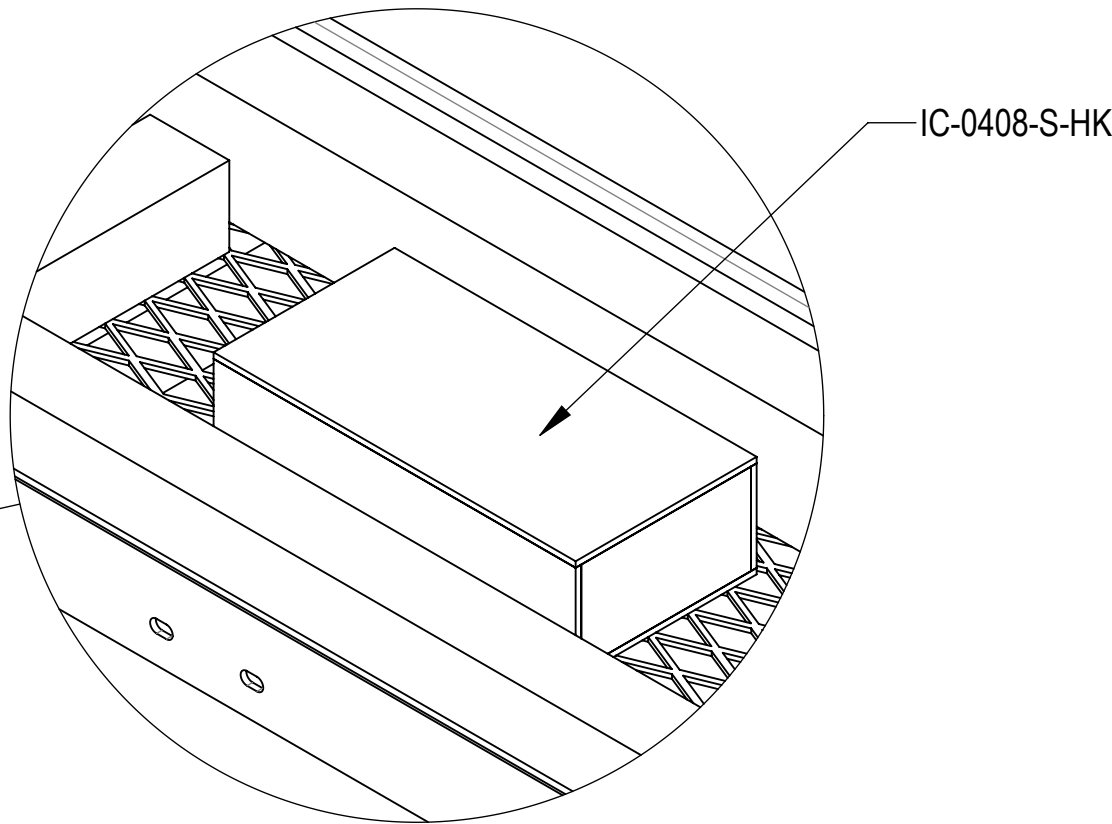
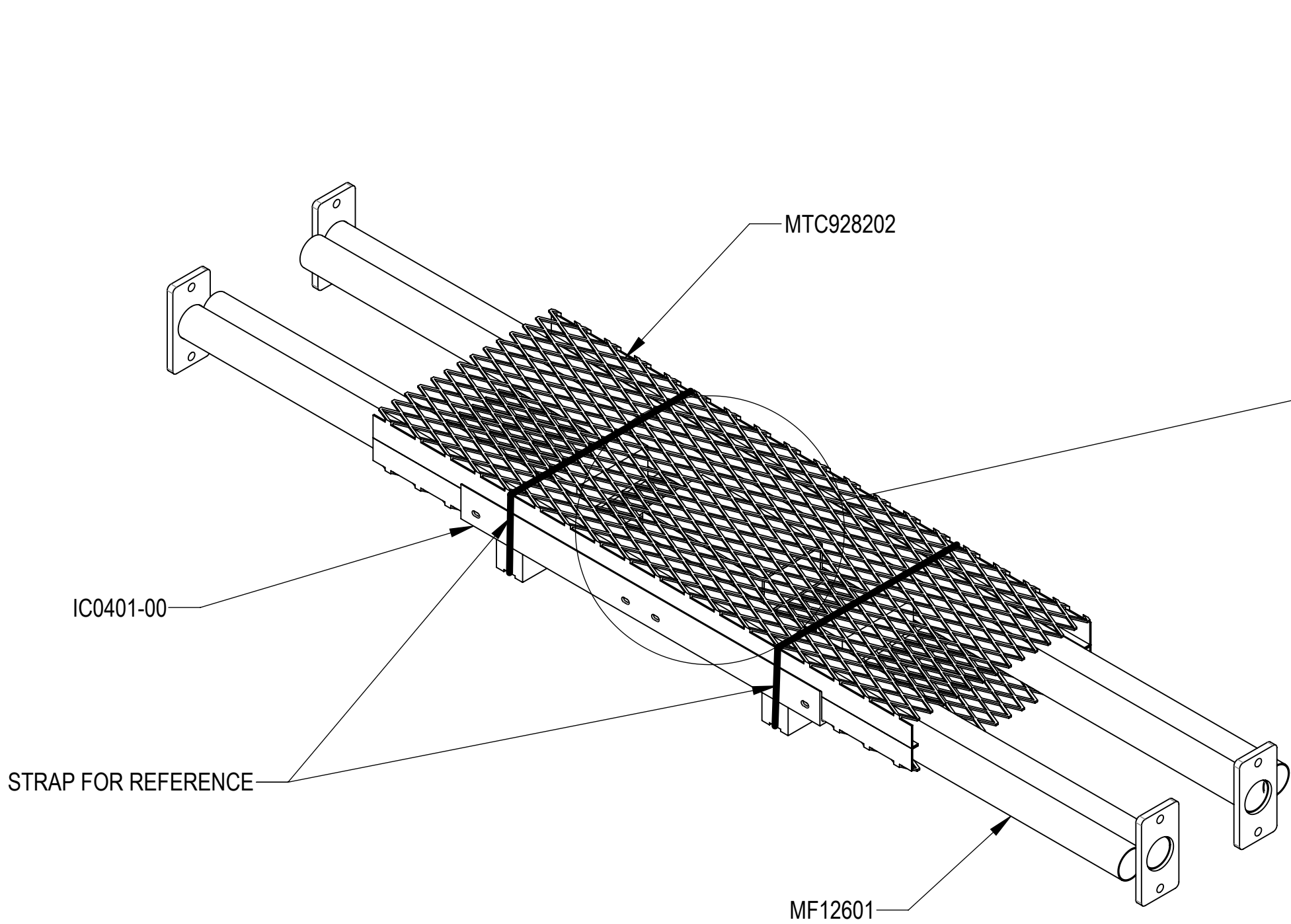
3

2

1

- 1.0 GENERAL NOTES
- 1.1 ALL METRIC DIMENSIONS ARE IN BRACKETS [X. X]
- 1.2 FOR PATENT INFO: <https://www.adwpat.com>
- 2.0 DESIGN NOTES
- 2.1 ANY HAZARDS OR OBSTRUCTIONS TO THE CLIMBING FACILITY AND SAFETY CLIMB MUST BE IDENTIFIED PRIOR TO INSTALLING THE APPURTENANCE. ADDITIONAL PRODUCTS MAY BE REQUIRED TO MAINTAIN THE INTEGRITY OF THE SAFETY CLIMB. DURING INSTALLATION, TEMPORARY AND/OR PERMANENT PRECAUTIONARY MEASURES SHOULD BE TAKEN TO PRESERVE THE CLIMBING FACILITY AND/OR SAFETY CLIMB.
- 3.0 MANUFACTURING/SPECIAL REQUIREMENTS
- 3.1 TIGHTEN ALL BOLTS SECURING FLAT PLATES BY THE TURN-OF-NUT METHOD. TIGHTEN ALL U-BOLTS USING TURN-OF-NUT METHOD WITH ATTENTION TO LEAVE EQUAL DISTANCE AND EQUAL FORCE ON EACH LEG OF THE U-BOLT.
- 4.0 TEST
- 5.0 PACKAGING
- 5.1 PACKAGING SHALL MEET ANDREW REQUIREMENTS PER DOCUMENT IS-PL-3005
- 5.2 PRINTED DOCUMENT TO BE PLACED INSIDE POLYBAG AND THEN IN SHIPPING CONTAINER
- 5.3 EXTRA HARDWARE MAY BE SUPPLIED, BAGGED AND SHIPPED

REVISIONS			
REV.	DESCRIPTION	DATE	APPROVED
A	INITIAL RELEASE	LL1090 13SEP24	YW1047 40204447CMO
B	UPDATED DRAWING DESCRIPTION; IPDATED DRAWING FORMAT	YX1027 24JUN25	YW1047 50103561AMO




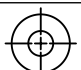
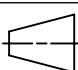
DETAIL C
SCALE 1 : 6

HIDE BAR GRATING MTC928202 FOR CLARITY

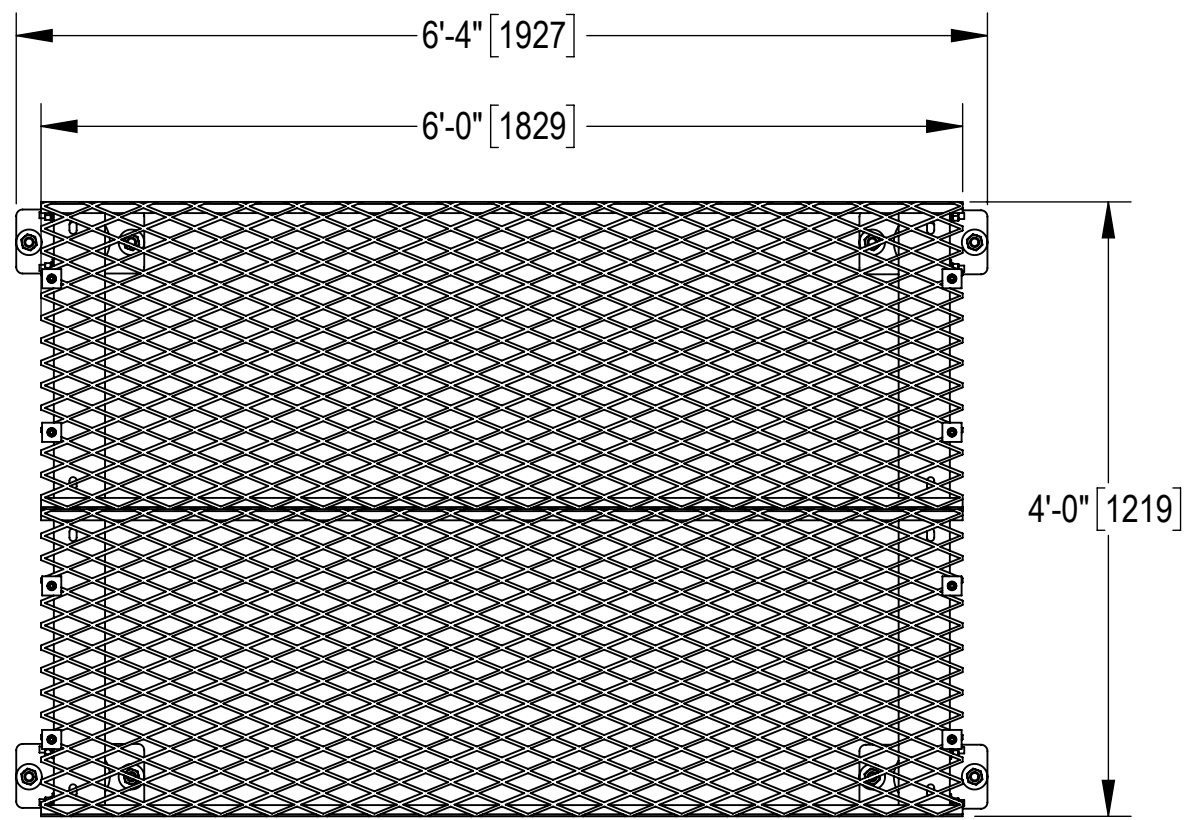
PACKAGE VIEW

DENSITY	MASS	382.04	lbs/in³
	VOLUME	1346.71	lbs
	SURFACE AREA	18827.85	in³
	HEIGHT	129.6"	
	LENGTH	75.9"	
	WIDTH	48.0"	

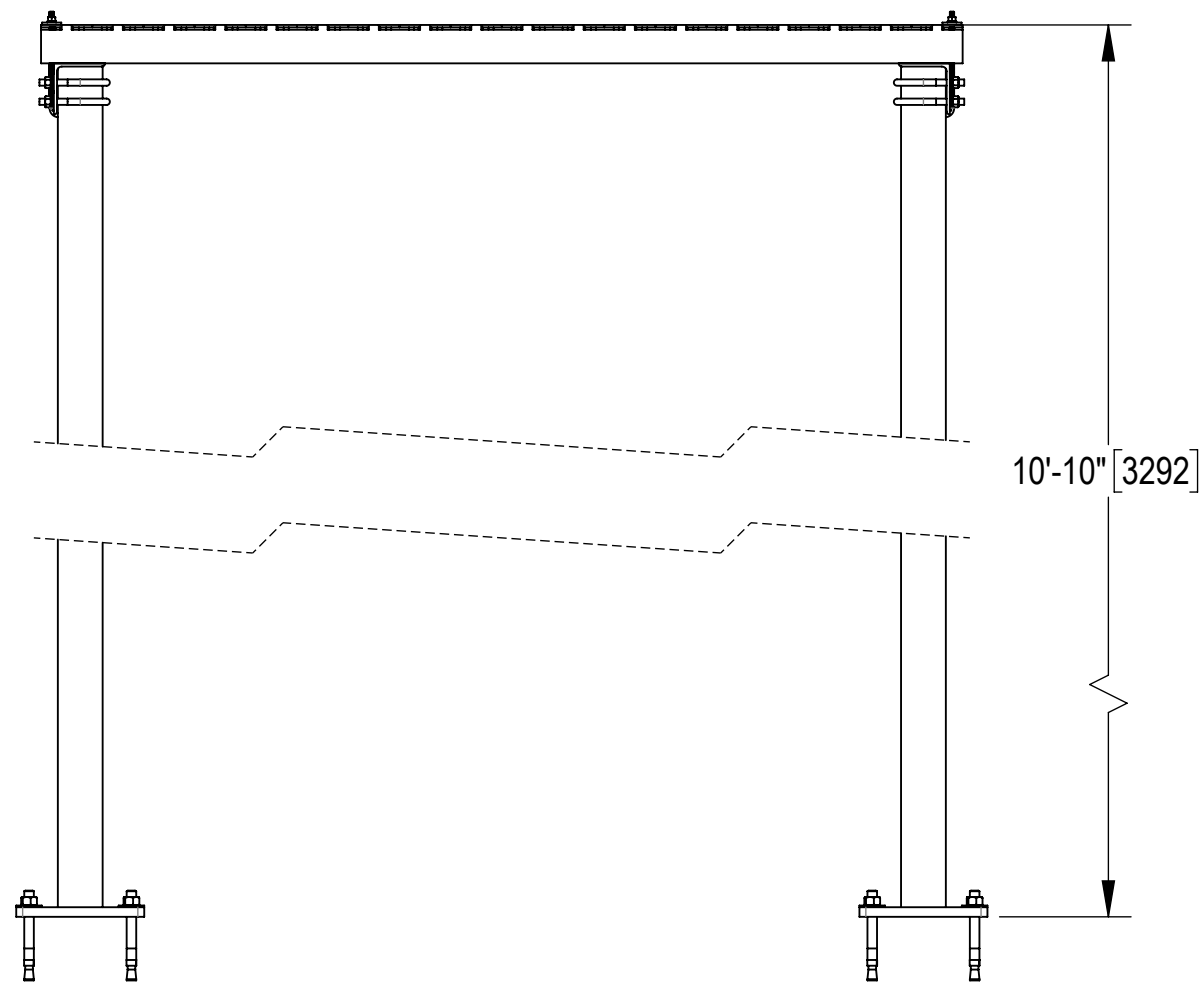
Confidential

<div>ANDREW® an Amphenol company</div>									
TOLERANCES						SAP MATERIAL MASTER			
1 PLACE .X[X] ± 0.2[6.3]		3 PLACE .XXX[X] ± 0.060[1.5]				IC-0406-S			
2 PLACE .XX[X] ± 0.12[3.0]		ANGLES ± 2°							
FINISH					MATERIAL				
UNLESS OTHERWISE SPECIFIED DIMENSIONS ARE IN INCHES INTERPRET PER ANSI Y 14.5M-1994		NAME	DATE	04'X06' ICE CANOPY 10'-6" BASE SHOE					
	CE	LL1090	13SEP24						
	RW	YX1027	06/23/2025						
	AD	YW1047	06/24/2025	SCALE 1:16		DOCUMENT NO. IC-0406-S			
	RE	YMENG	06/24/2025						
	ECN 50103561AMO								
	SIZE	Auth Group	INSL	MODEL			DRAWING		
C			VERSION	STATUS	REVISION	VERSION	STATUS	REVISION	
			00	RE	A	01	RE	B	

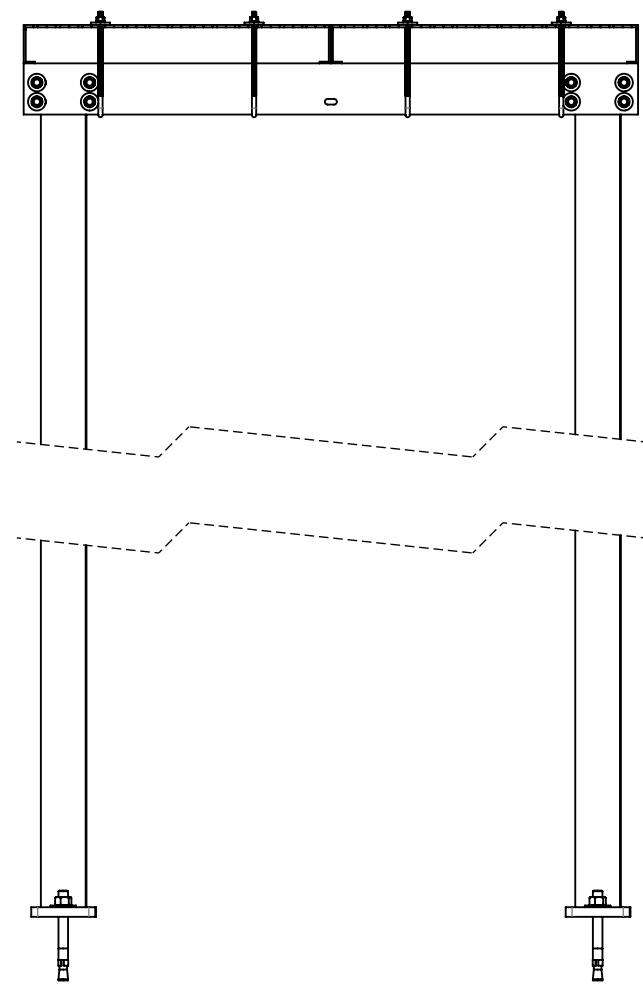
D



C



B

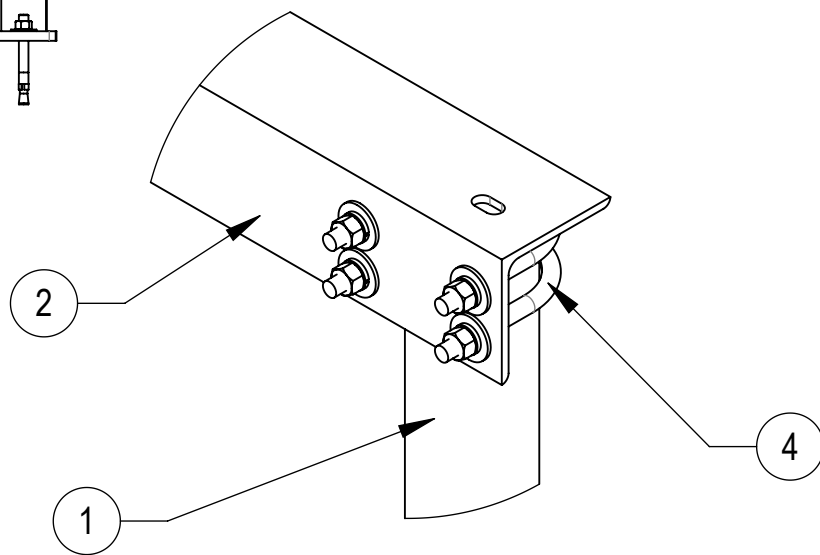


COMPONENT PART NUMBERS PROVIDED FOR ASSEMBLY PURPOSES;
INDIVIDUAL COMPONENTS MAY BE SHIPPED AS PARTS WITHIN AN INCLUDED KIT.

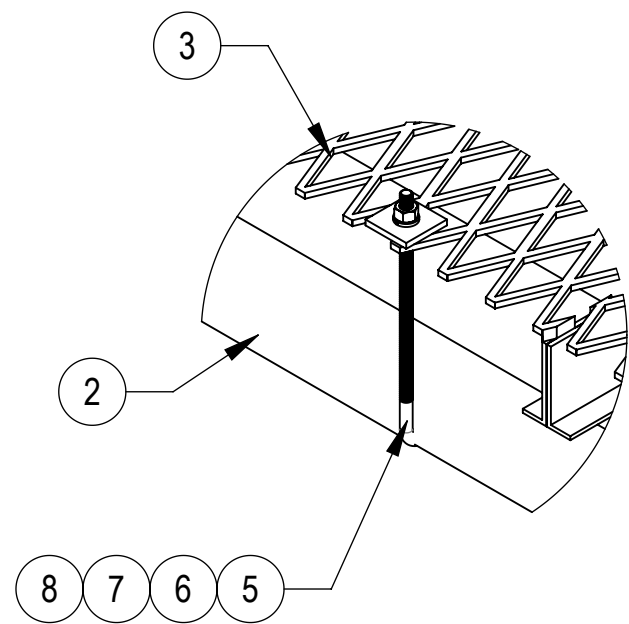
ITEM NO.	PART NUMBER	DESCRIPTION	QTY.	WEIGHT	NOTE NO.
1	MF12601	BASE SHOE WELDMENT, 10' 6"	4	53.81 LBS	
2	IC0401-00	4' ICE SHIELD SUPPORT BRACKET	2	51.95 LBS	
3	MTC928202	SAFETY GRATING 24" X 6'	2	48.23 LBS	
4	GUB-4355	1/2" X 3-5/8" X 5" GALV U-BOLT	8	0.71 LBS	
5	GJB0380	8" GALV J-BOLT KIT	8	0.23 LBS	
6	MT-387	SQUARE WASHER 1-1/2"X1-1/2" W/ 7/16 HOLE	8	0.11 LBS	
7	GWL-03	3/8" GALV LOCK WASHER	8	0.01 LBS	
8	GN-03	3/8" GALV HEX NUT	8	0.02 LBS	
9	MT-287	3/4" ANCHOR BOLT	8	1.08 LBS	

A

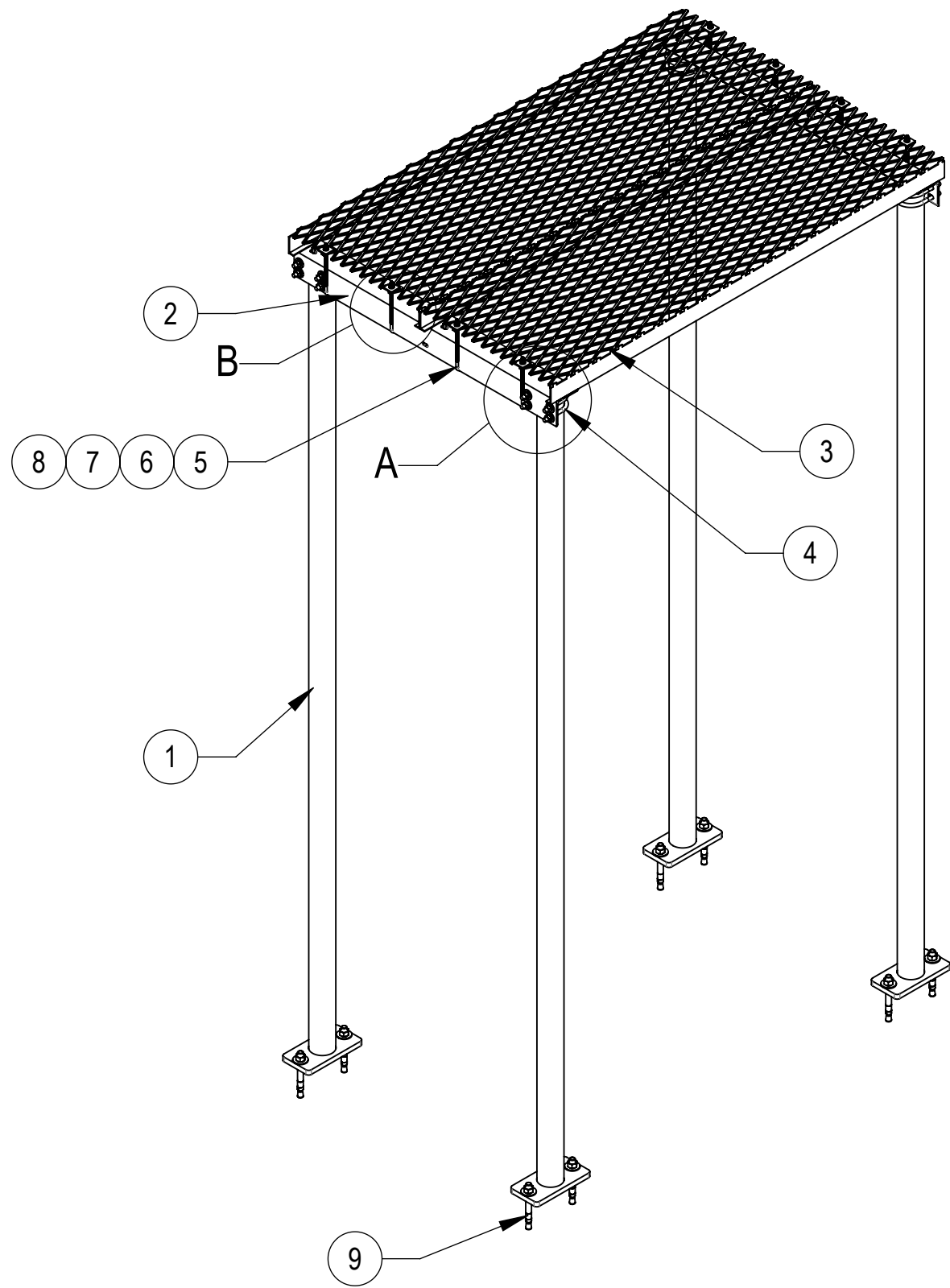
DETAIL A
SCALE 1 : 5



DETAIL B
SCALE 1 : 5



DETAIL C
SCALE 1 : 5



D

C

B

A

ANDREW® an Amphenol company

TITLE
04'X06' ICE CANOPY 10'-6" BASE SHOE

SIZE
C

SCALE
1:32

DOCUMENT NO.
IC-0406-S

DRAWING

VERSION	STATUS	REVISION
01	RE	B

SHEET
2 OF 2

Confidential