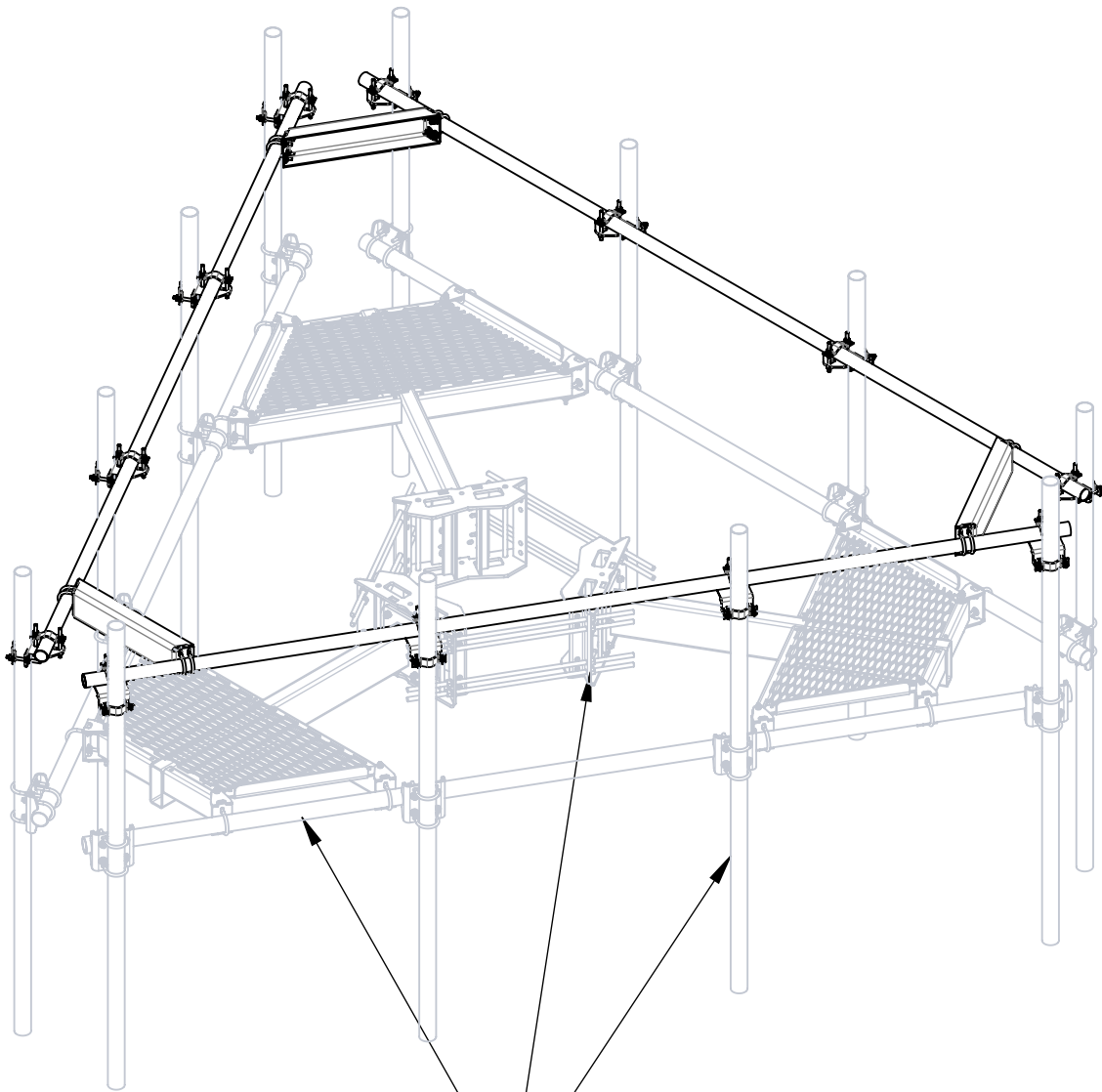
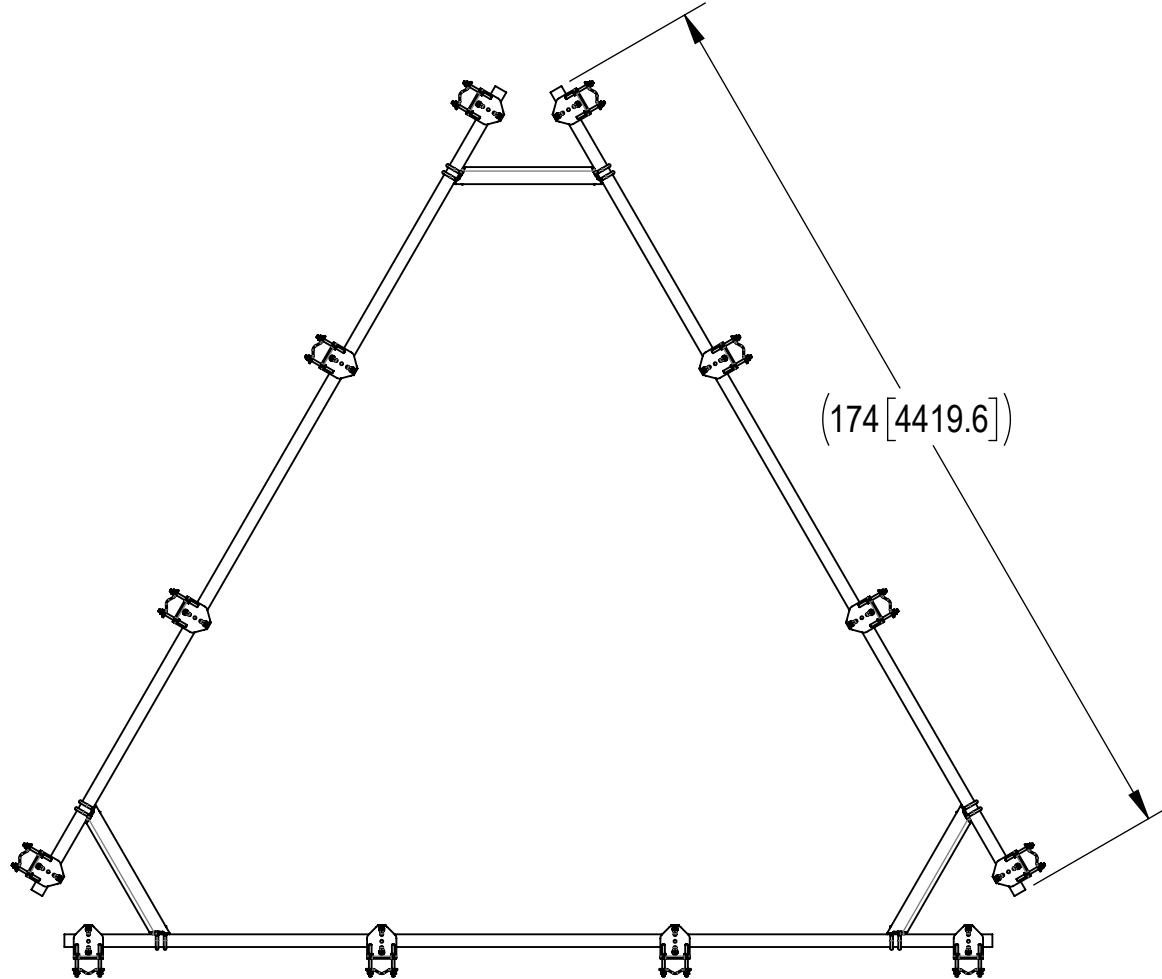
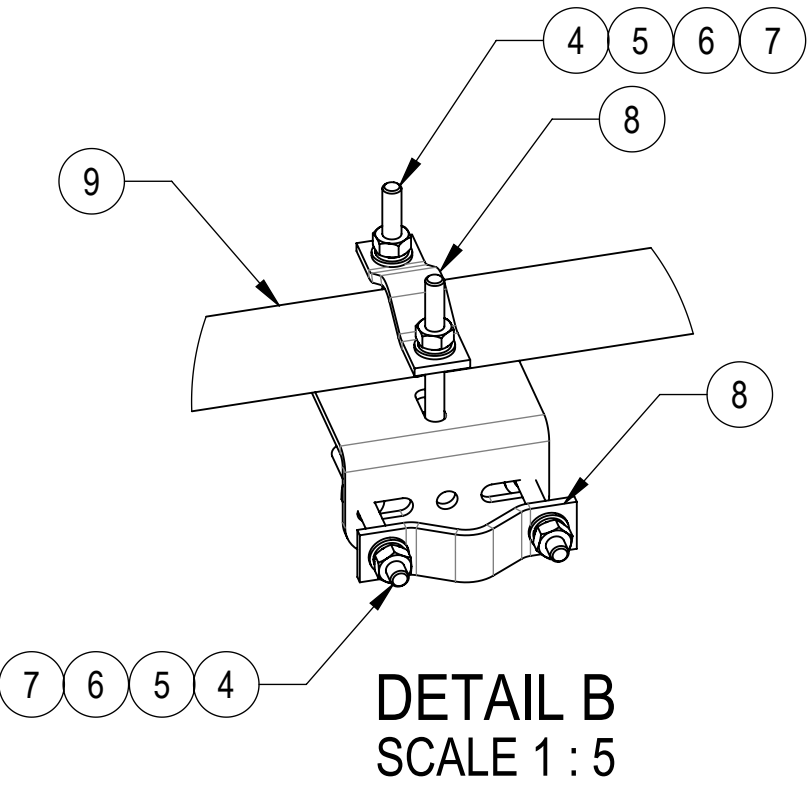
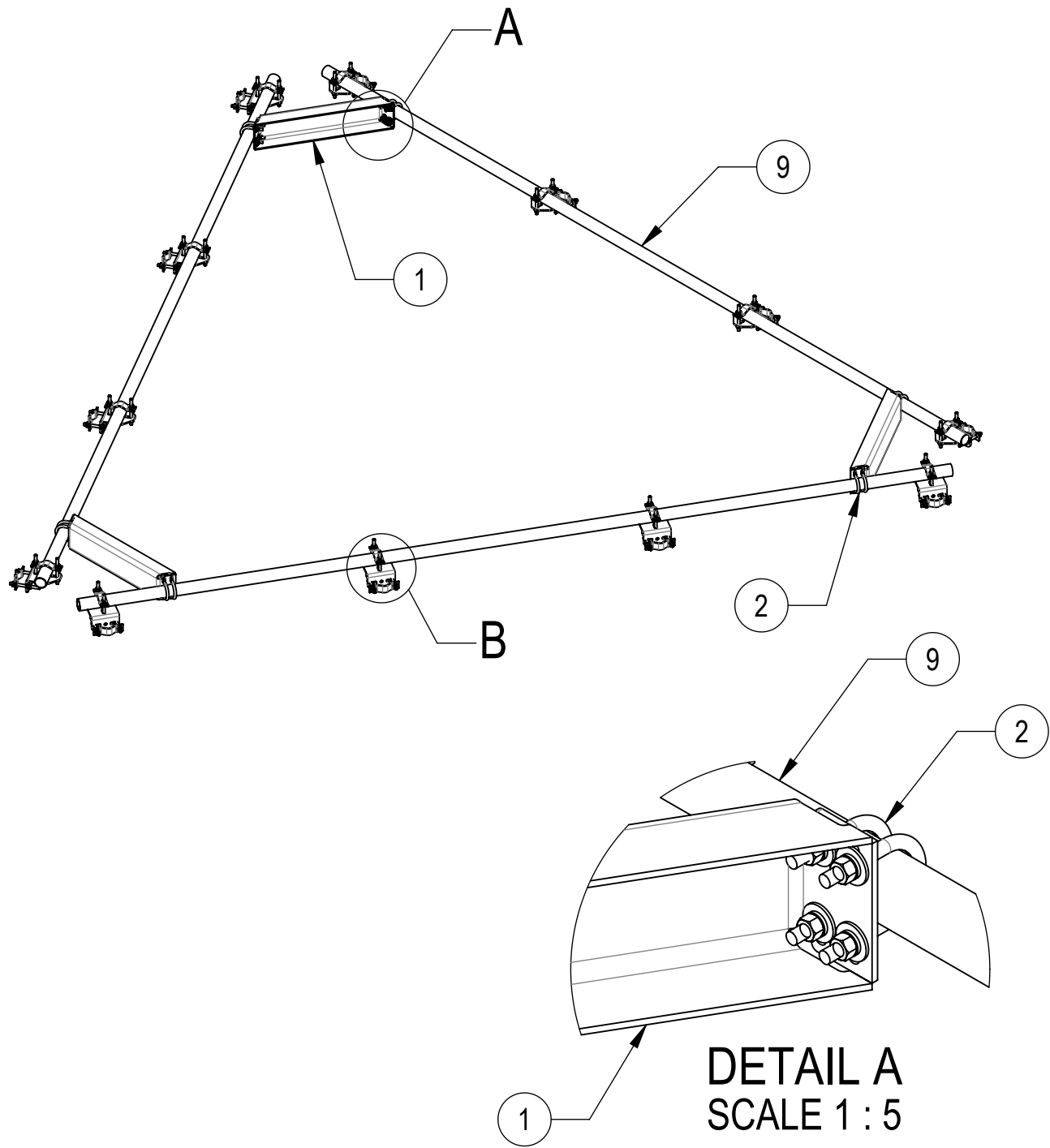


- 1.0 GENERAL NOTES
- 1.1 ALL METRIC DIMENSIONS ARE IN BRACKETS [X. X]
- 1.2 FOR PATENT INFO: <https://www.cs-pat.com>
- 2.0 DESIGN NOTES
- 2.1 ANY HAZARDS OR OBSTRUCTIONS TO THE CLIMBING FACILITY AND SAFETY CLIMB MUST BE IDENTIFIED PRIOR TO INSTALLING THE APPURTENANCE. ADDITIONAL PRODUCTS MAY BE REQUIRED TO MAINTAIN THE INTEGRITY OF THE SAFETY CLIMB. DURING INSTALLATION, TEMPORARY AND/OR PERMANENT PRECAUTIONARY MEASURES SHOULD BE TAKEN TO PRESERVE THE CLIMBING FACILITY AND/OR SAFETY CLIMB.
- 3.0 MANUFACTURING/SPECIAL REQUIREMENTS
- 3.1 TIGHTEN ALL BOLTS SECURING FLAT PLATES BY THE TURN-OF-NUT METHOD. TIGHTEN ALL U-BOLTS USING TURN-OF-NUT METHOD WITH ATTENTION TO LEAVE EQUAL DISTANCE AND EQUAL FORCE ON EACH LEG OF THE U-BOLT.
- 4.0 TEST
- 5.0 PACKAGING
- 5.1 PACKAGING SHALL MEET COMMSCOPE REQUIREMENTS PER DOCUMENT IS-PL-3005
- 5.2 PRINTED DOCUMENT TO BE PLACED INSIDE POLYBAG AND THEN IN SHIPPING CONTAINER
- 5.3 EXTRA HARDWARE MAY BE SUPPLIED, BAGGED AND SHIPPED

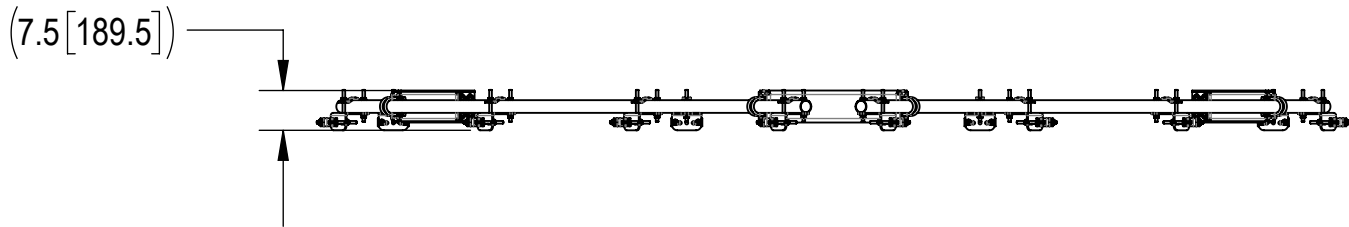
REVISIONS			
REV.	DESCRIPTION	DATE	APPROVED
K	INITIAL RELEASE	YX1027 18FEB25	BA1025 50101369AMO



RING MOUNT PLATFORM
AND PIPE MOUNTS SOLD
SEPARATELY



BOTTOM VIEW




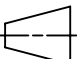
COMPONENT PART NUMBERS PROVIDED FOR ASSEMBLY PURPOSES;
INDIVIDUAL COMPONENTS MAY BE SHIPPED AS PARTS WITHIN AN INCLUDED KIT.

ITEM NO.	PART NUMBER	DESCRIPTION	QTY.	WEIGHT	NOTE NO.
1	MT19525	CORNER WELDMENT FOR MT-195	3	22.11 LBS	
2	GUB-4240	1/2" X 2-1/2" X 4" GALV U-BOLT	12	0.56 LBS	
3	XAU01	ANGLE, CROSSOVER, 1.9-3.5" X 1.9-3.5" OD	12	2.98 LBS	
4	MT-379-6	1/2" X 6" GALV THREADED ROD	48	0.33 LBS	
5	GWFO4A	1/2" GALV FLAT WASHER (A325)	96	0.02 LBS	
6	GWL-04	1/2" GALV LOCK WASHER	96	0.01 LBS	
7	GN-04A	1/2" GALV HEX NUT (A194 2H)	96	0.07 LBS	
8	ACP10	1.5" - 3.5" O.D. CLAMP HALF	24	0.61 LBS	
9	MT537174	2.375" O.D. X 174" PIPE	3	42.15 LBS	

DENSITY		lbs/in³
MASS	277.54	lbs
VOLUME	979.37	in³
SURFACE AREA	12471.11	in²
HEIGHT	7.59"	
LENGTH	194.35"	
WIDTH	168.31"	

© 2025 CommScope, Inc. Confidential

COMMSCOPE, INC. OF NORTH CAROLINA

TOLERANCES			SAP MATERIAL MASTER					
1 PLACE .X[X] ± .25[6.3]		3 PLACE .XXX[X] ± 0.06[1.5]		MT-195-14U				
2 PLACE .XX[X] ± 0.12[3.0]		ANGLES ± 2°						
FINISH			MATERIAL					
UNLESS OTHERWISE SPECIFIED DIMENSIONS ARE IN INCHES INTERPRET PER ANSI Y 14.5M-1994		NAME	DATE	TOP MOUNT KIT, 14' PLATFORM W/ XA-U				
	CE	YX1027	18FEB25					
	RW	YX1027	02/20/2025					
	RV							
	AD	YMENG	02/20/2025	SCALE 1:32	DOCUMENT NO. MT-195-14U			
	RE	YMENG	02/20/2025					
	ECN 50101369AMO							
	SIZE	WORK AREA	INSL	MODEL		DRAWING		SHEET 1 OF 1
C			VERSION	STATUS	REVISION	VERSION	STATUS	
			00	RE	A	00	RE	K