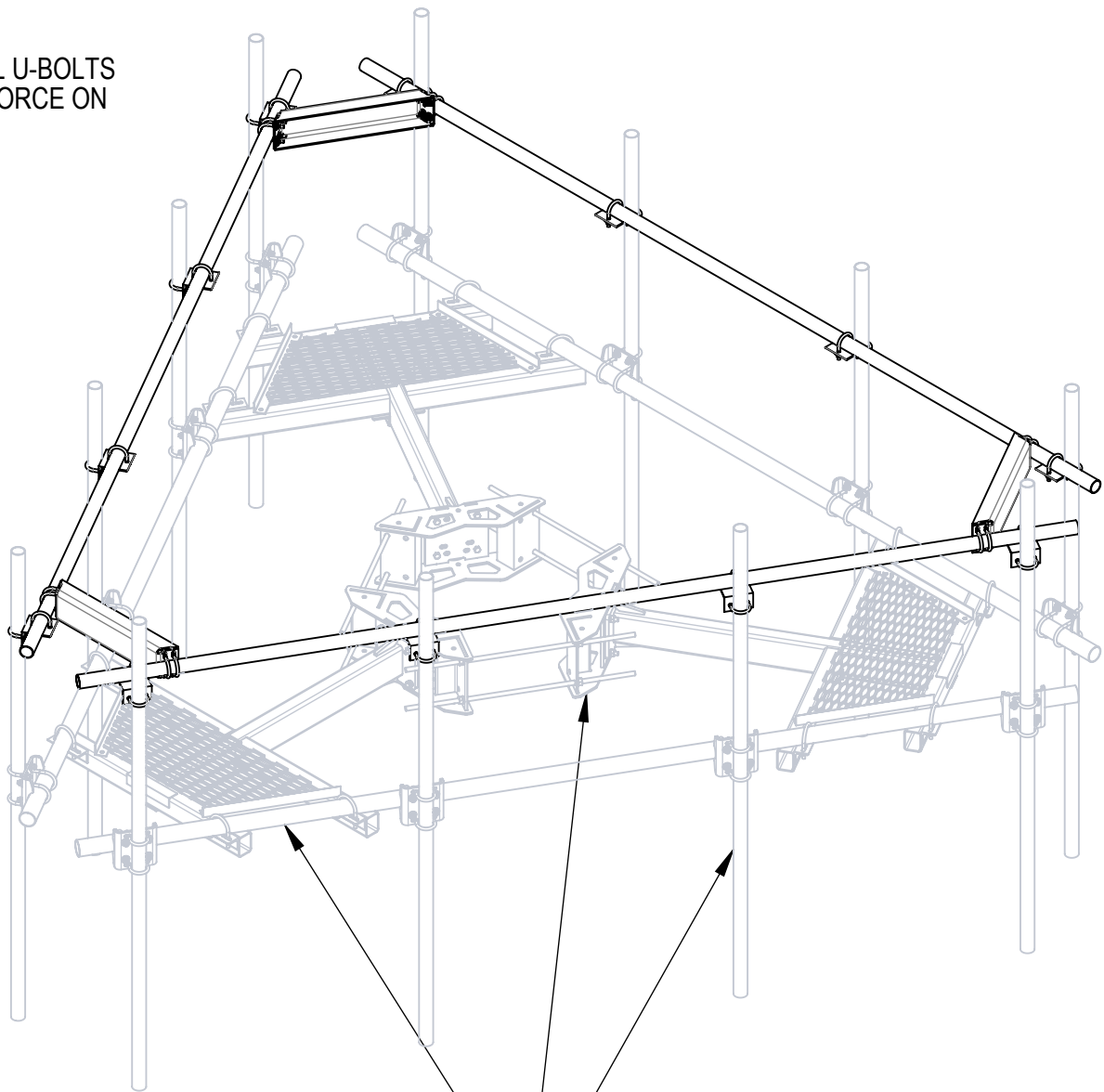
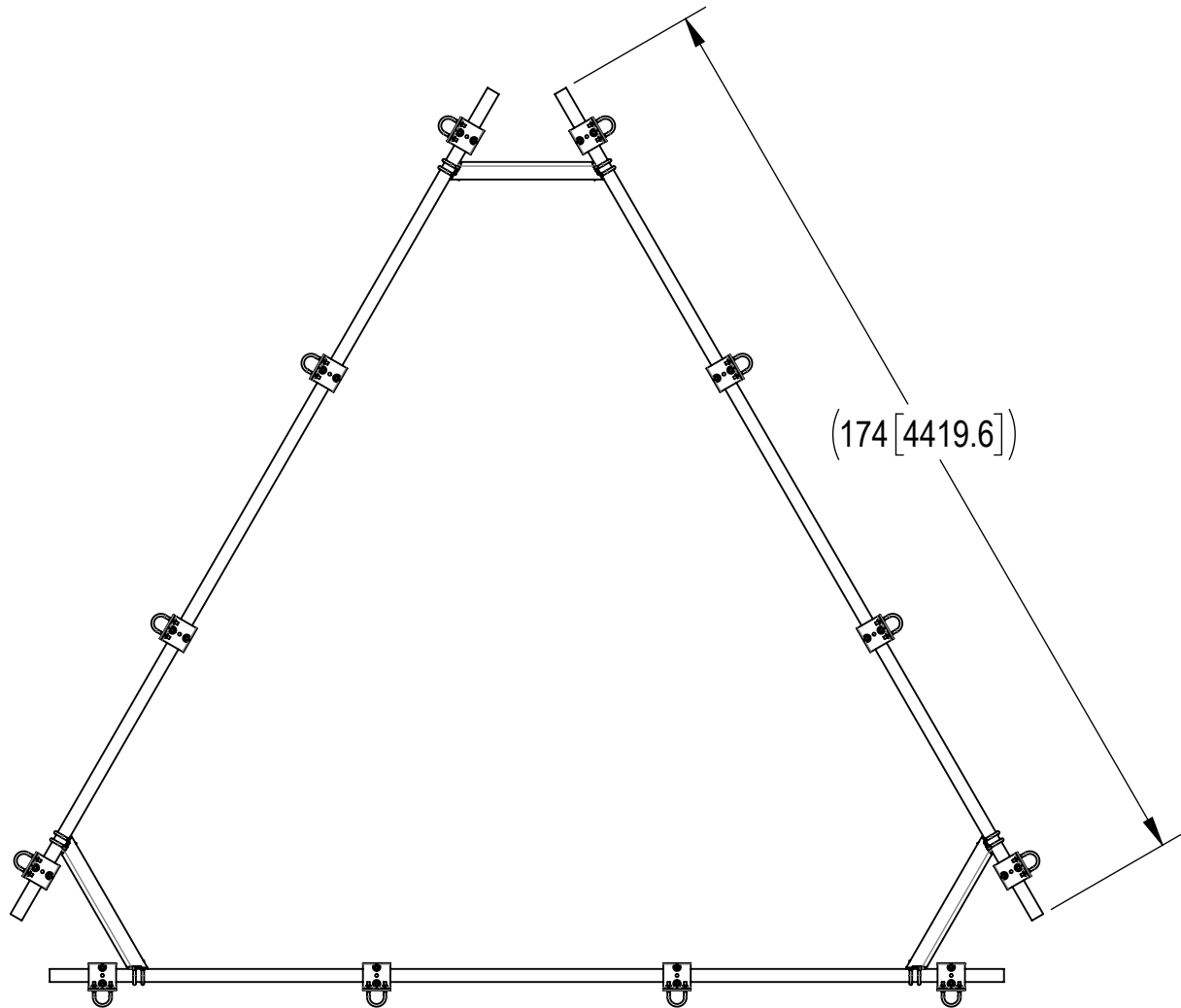


- 1.0 GENERAL NOTES
- 1.1 ALL METRIC DIMENSIONS ARE IN BRACKETS [X. X]
- 1.2 FOR PATENT INFO: <https://www.cs-pat.com>
- 2.0 DESIGN NOTES
- 2.1 ANY HAZARDS OR OBSTRUCTIONS TO THE CLIMBING FACILITY AND SAFETY CLIMB MUST BE IDENTIFIED PRIOR TO INSTALLING THE APPURTENANCE. ADDITIONAL PRODUCTS MAY BE REQUIRED TO MAINTAIN THE INTEGRITY OF THE SAFETY CLIMB. DURING INSTALLATION, TEMPORARY AND/OR PERMANENT PRECAUTIONARY MEASURES SHOULD BE TAKEN TO PRESERVE THE CLIMBING FACILITY AND/OR SAFETY CLIMB.
- 3.0 MANUFACTURING/SPECIAL REQUIREMENTS
- 3.1 TIGHTEN ALL BOLTS SECURING FLAT PLATES BY THE TURN-OF-NUT METHOD. TIGHTEN ALL U-BOLTS USING TURN-OF-NUT METHOD WITH ATTENTION TO LEAVE EQUAL DISTANCE AND EQUAL FORCE ON EACH LEG OF THE U-BOLT.
- 4.0 TEST
- 5.0 PACKAGING
- 5.1 PACKAGING SHALL MEET COMMSCOPE REQUIREMENTS PER DOCUMENT IS-PL-3005
- 5.2 PRINTED DOCUMENT TO BE PLACED INSIDE POLYBAG AND THEN IN SHIPPING CONTAINER
- 5.3 EXTRA HARDWARE MAY BE SUPPLIED, BAGGED AND SHIPPED

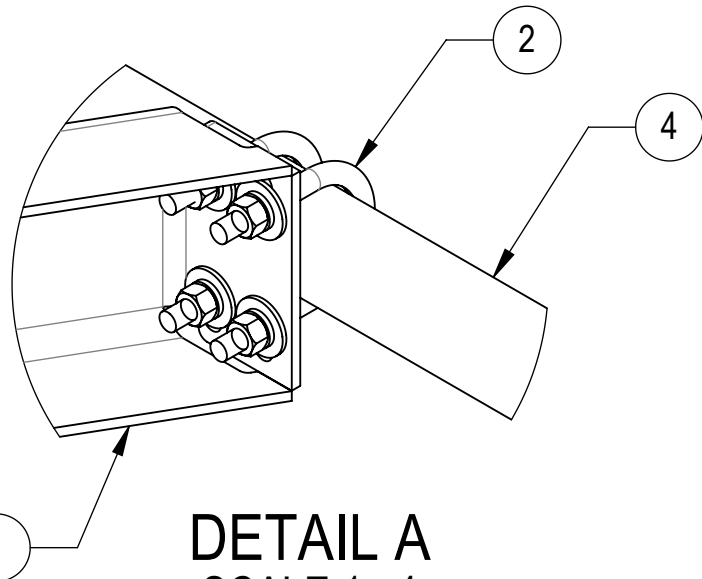
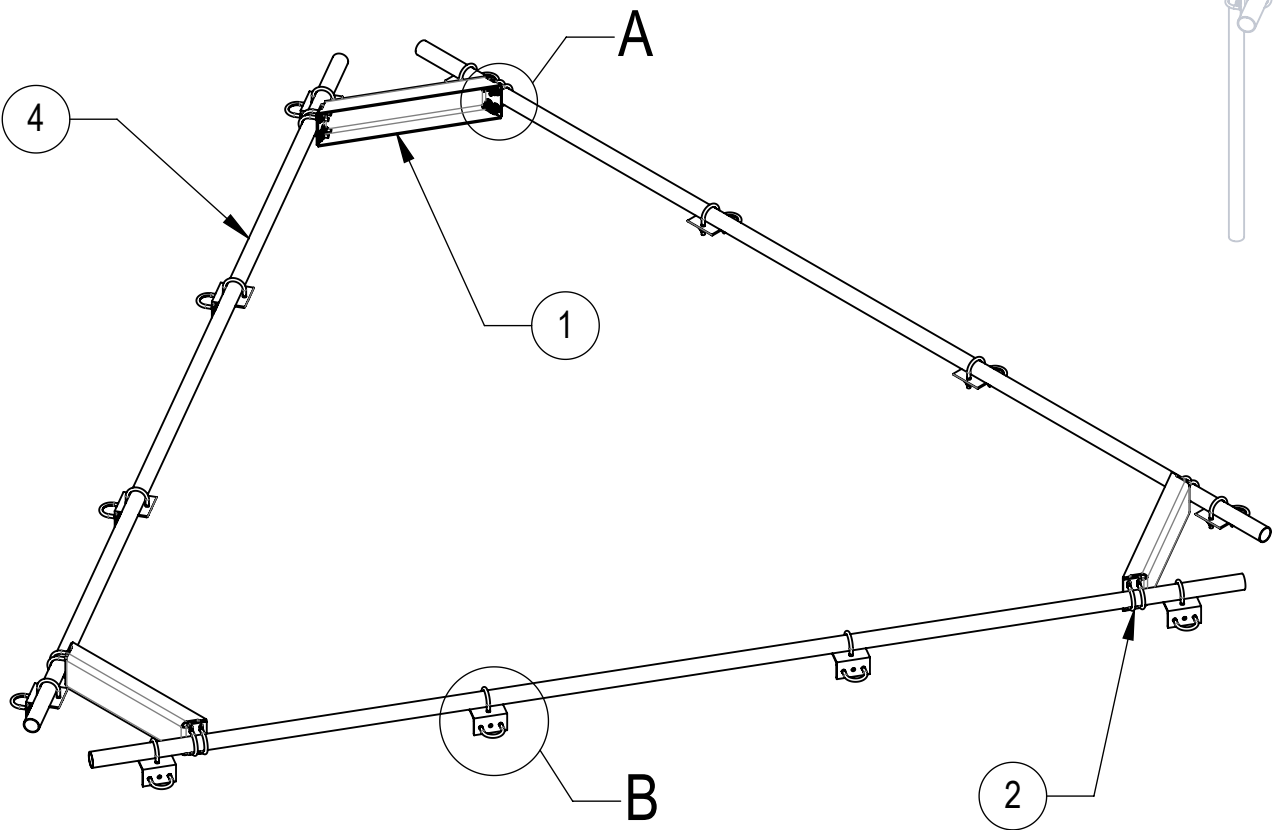
REVISIONS			
REV.	DESCRIPTION	DATE	APPROVED
K	INITIAL RELEASE	YX1027 18FEB25	BA1025 50101369AMO



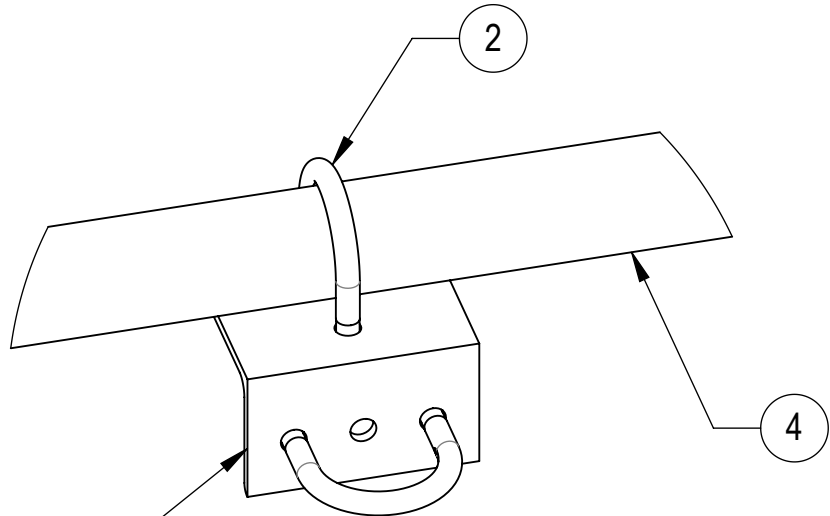
RING MOUNT PLATFORM
AND PIPE MOUNTS SOLD
SEPARATELY



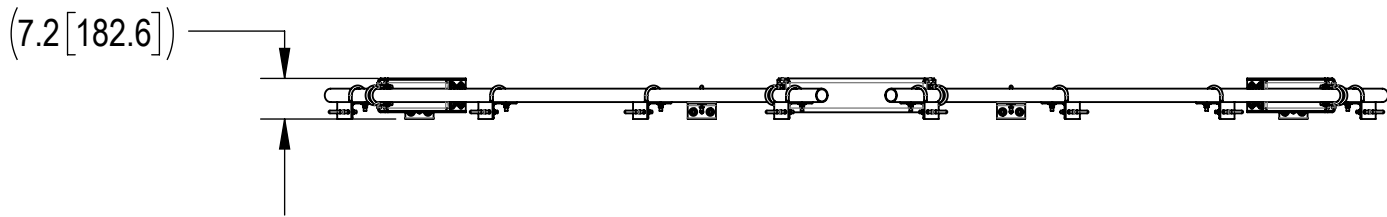
BOTTOM VIEW




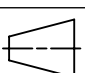
DETAIL A
SCALE 1 : 4



DETAIL B
SCALE 1 : 4



COMMSCOPE, INC. OF NORTH CAROLINA

TOLERANCES				SAP MATERIAL MASTER				
1 PLACE .X[X] ± .25[6.3]		3 PLACE .XXX[X] ± 0.06[1.5]		MT-195-14				
2 PLACE .XX[X] ± 0.12[3.0]		ANGLES ± 2°						
FINISH				MATERIAL				
UNLESS OTHERWISE SPECIFIED DIMENSIONS ARE IN INCHES INTERPRET PER ANSI Y 14.5M-1994		NAME	DATE	TOP MOUNT KIT, 14' PLATFORM				
	CE	YX1027	18FEB25					
	RW	YX1027	02/20/2025					
	RV							
	AD	YMENG	02/20/2025	SCALE	DOCUMENT NO.			
	RE	YMENG	02/20/2025					
	ECN 50101369AMO			1:32	MT-195-14			
SIZE	WORK AREA	INSL	MODEL		DRAWING			SHEET 1 OF 1
C			VERSION	STATUS	REVISION	VERSION	STATUS	
			02	RE	C	00	RE	K

COMPONENT PART NUMBERS PROVIDED FOR ASSEMBLY PURPOSES;
INDIVIDUAL COMPONENTS MAY BE SHIPPED AS PARTS WITHIN AN INCLUDED KIT.

ITEM NO.	PART NUMBER	DESCRIPTION	QTY.	WEIGHT	NOTE NO.
1	MT19525	CORNER WELDMENT FOR MT-195	3	22.11 LBS	
2	GUB-4240	1/2" X 2-1/2" X 4" GALV U-BOLT	36	0.56 LBS	
3	XA202001	ANTENNA MOUNT ANGLE	12	2.65 LBS	
4	MT537174	2.375" O.D. X 174" PIPE	3	42.15 LBS	

DENSITY	MASS	251.55	lbs/in³
VOLUME	888.06	in³	
SURFACE AREA	11455.76	in²	
HEIGHT	7.2"		
LENGTH	188.3"		
WIDTH	167.6"		